

VOR/DME OWB

108.6

Chan 23

APP CRS

048°

Rwy Idg

5000

TDZE

405

Apt Elev

407

VOR RWY 6

OWENSBORO-DAVIESS COUNTY RGNL (OWB)

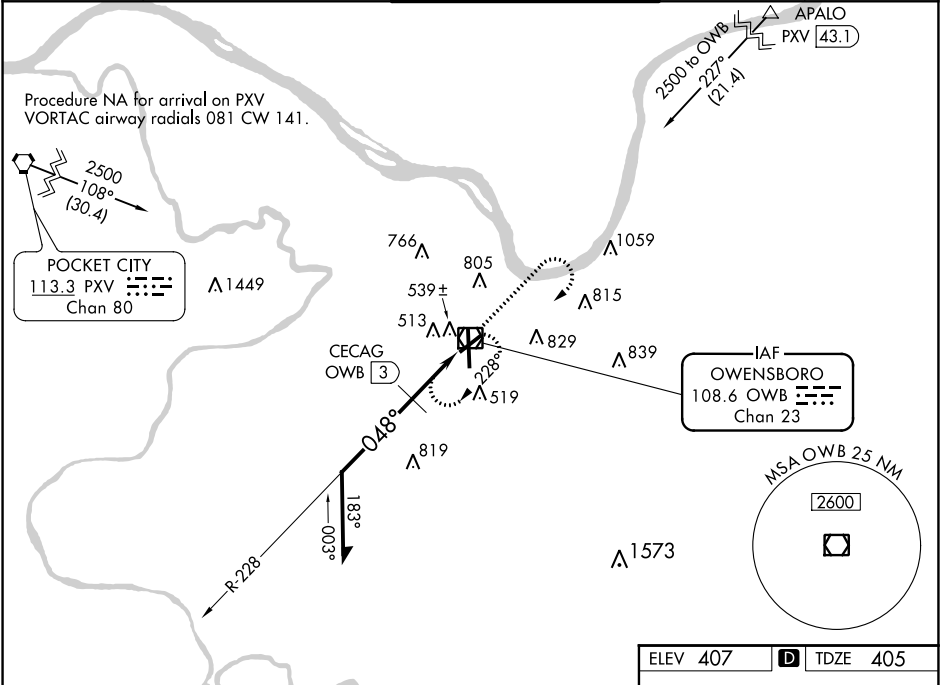
▼

▲

Rwy 6 helicopter visibility reduction below ¾ SM NA.

MISSED APPROACH: Climb to 1500 then climbing right turn to 2500 direct OWB VOR/DME and hold.

AWOS-3PT	EVANSVILLE APP CON ★	OWENSBORO TOWER ★	GND CON	UNICOM
119.025	124.025 290.9	120.7 (CTAF) 251.15	121.7	122.95



Remain within 10 NM

OWB VOR/DME

1500

2500

OWB

2100

228°

048°

1180

CECAG OWB 3

OWB 1.7

2.82°

TCH 45

1.3 NM

1.2

CATEGORY	A	B	C	D
S-6	1180-1 775 (800-1)	1180-1¼ 775 (800-1¼)	1180-2½	775 (800-2½)
CIRCLING	1180-1 773 (800-1)	1180-1¼ 773 (800-1¼)	1180-2½	773 (800-2½)
CECAG FIX MINIMUMS				
S-6	820-1	415 (500-1)	820-1½	415 (500-1½)
CIRCLING	860-1 453 (500-1)	1120-1 713 (800-1)	1140-2 733 (800-2)	1140-2¼ 733 (800-2¼)

ELEV 407

TDZE 405

OWB VOR/DME

048° to

MIRL Rwy 6-24

HIRL Rwy 18-36

REIL Rws 6, 18, and 24