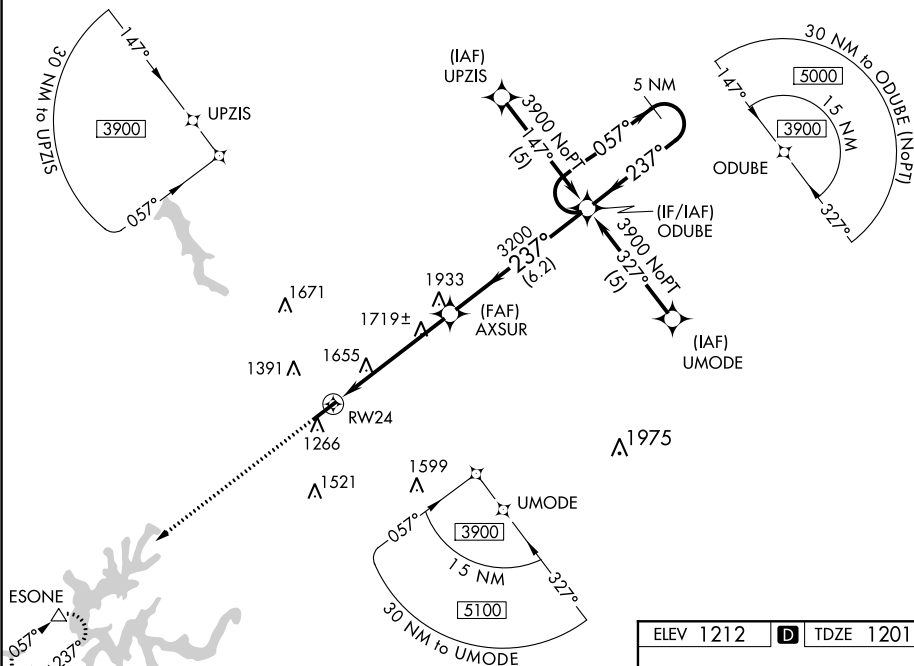


LONDON-CORBIN AIRPORT-MAGEE FIELD (LOZ)

**MISSED APPROACH:**  
Climb to 3900 direct  
ESONE and hold.

UNICOM  
123.0 (CTAF) **L**



Plan view of the runway layout. The diagram shows a runway labeled RW24 with a width of 60m. The runway is oriented at 057°. The distance from the runway end to the intersection with the road is 3200m. The road is labeled AXSUR. The distance from the intersection to the road end is 3900m. The road is oriented at 237°. The road width is 60m. The road is labeled ODBE. The distance from the road end to the intersection is 3200m. The road is oriented at 237°. The road width is 60m. The road is labeled GP 3.45° TCH 60.

CATEGORY		5.3 NM A		6.2 NM B		C	D
LPV	DA	1510-1 309 (300-1)					NA
LNAV	MDA	1980-1 779 (800-1)	1980-1¼ 779 (800-1¼)	1980-2¼ 779 (800-2¼)	1980-2½ 779 (800-2½)		
CIRCLING		1980-1 768 (800-1)	1980-1¼ 768 (800-1¼)	2040-2½ 828 (900-2½)	2040-2¾ 828 (900-2¾)		

MIRL Rwy 6-24 **L**  
REIL Rwy 6 and 24 **L**