

VOR/DME LOZ	APP CRS	Rwy Idg	5000
116.1	025°	TDZE	1212
Chan 108		Apt Elev	1212

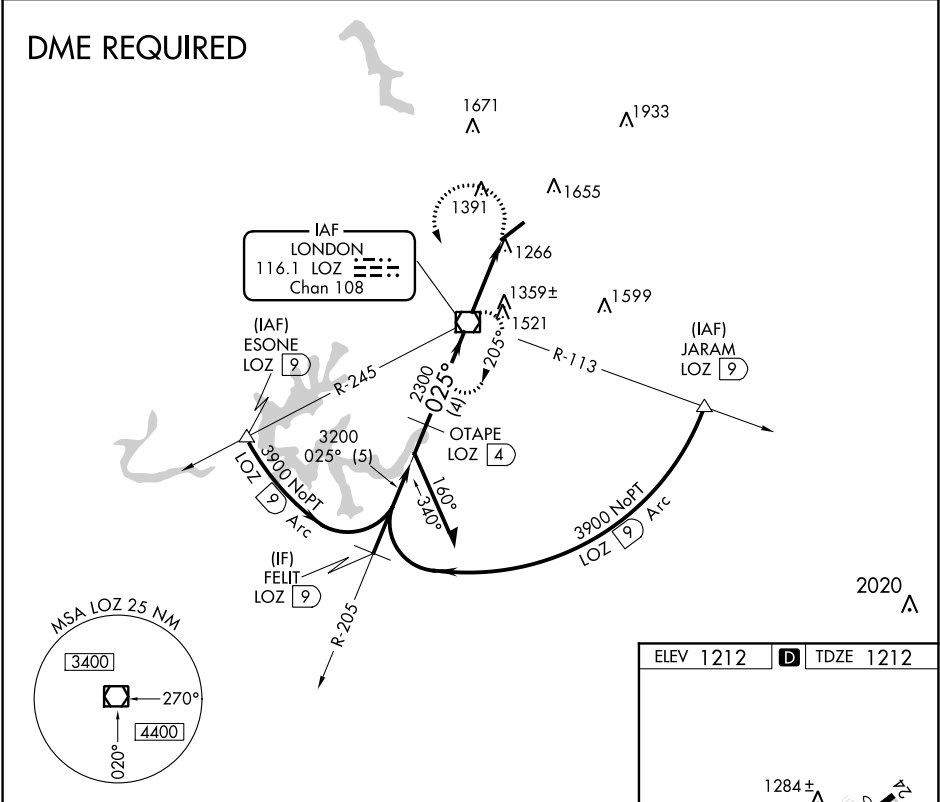
VOR RWY 6

LONDON-CORBIN AIRPORT-MAGEE FIELD (LOZ)

⚠ When local altimeter setting not received, use Somerset altimeter setting and increase all MDAs 100 feet and increase S-6 Cat C/D and Circling Cat C/D visibility ¼ mile. Night landing: Rwy 6 NA.

MISSED APPROACH: Climbing left turn to 4000 direct LOZ VOR/DME and hold, continue climb-in-hold to 4000.

ASOS 119.075	INDIANAPOLIS CENTER 124.625 371.925	UNICOM 123.0 (CTAF) 0
-----------------	--	---------------------------------



Remain within 10 NM

CATEGORY	A	B	C	D
S-6	1620-1	408 (500-1)	1620-1¼	408 (500-1¼)
CIRCLING	1780-1	568 (600-1)	2040-2½ 828 (900-2½)	2040-2¾ 828 (900-2¾)

ELEV 1212	D	TDZE 1212
-----------	----------	-----------

Knots	60	90	120	150	180
Min:Seq	3:12	2:08	1:36	1:17	1:04

VOR RWY 6

SE-1, 31 DEC 2020 to 28 JAN 2021

SE-1, 31 DEC 2020 to 28 JAN 2021