
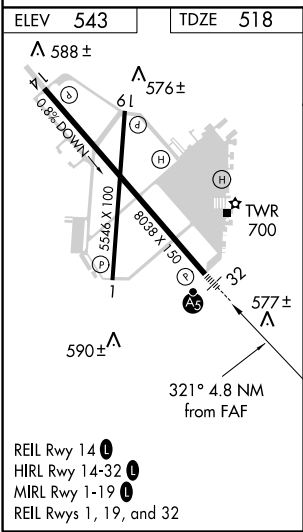
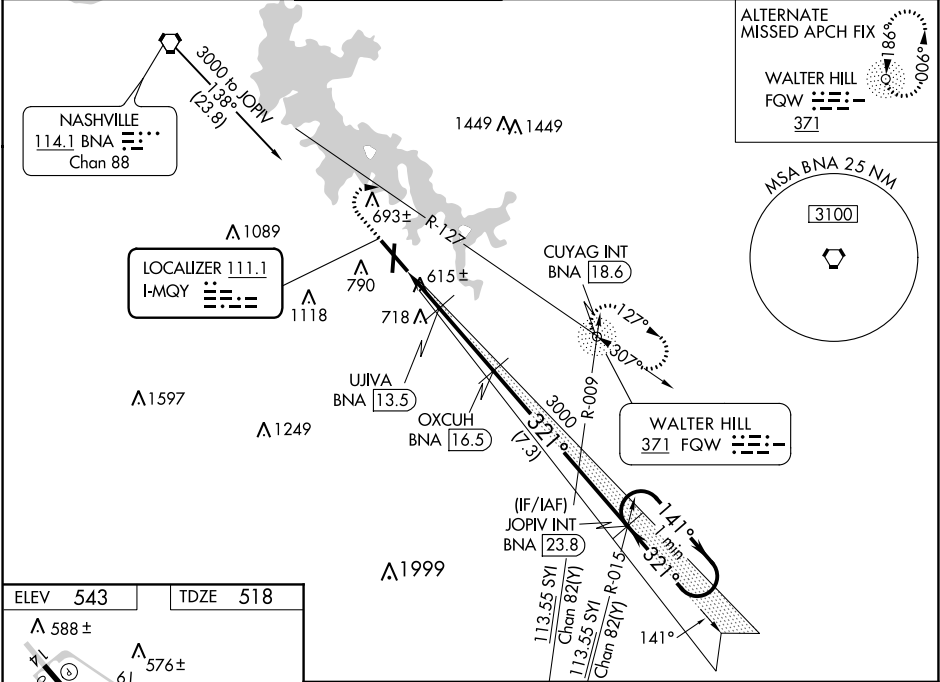


LOC I-MQY 111.1	APP CRS 321°	Rwy Idg 8038 TDZE 518 Apt Elev 543
---------------------------	------------------------	---

ILS or LOC/DME RWY 32
SMYRNA (MQY)

<p>⚠ DME from BNA VORTAC, simultaneous reception of I-MQY and BNA DME required. For inop MALSRR, increase S-LOC 32 Cats C/D visibility to 1 mile. For inop MALSRR when using Nashville Intl altimeter setting, increase S-LOC 32 Cats C/D visibility ½ mile. When local altimeter setting not received, use Nashville Intl altimeter setting and increase all DA to 749 feet and all MDA 40 feet; increase S-LOC 32 Cats C/D visibility ½ mile and increase Circling Cats C/D visibility ¼ mile. VDP NA when using Nashville Intl altimeter setting.</p>	<p>MALSRR</p> 	<p>MISSED APPROACH: Climb to 1500 then climbing right turn to 3000 on heading 090° and BNA VORTAC R-127 to CUYAG INT/ BNA VORTAC 18.6 DME and hold.</p>
---	---	---

AWOS-3PT 119.125	NASHVILLE APP CON 118.4 360.7	SMYRNA TOWER ★ 118.5 (CTAF) 0 233.1	GND CON 121.4	CLNC DEL 121.4	CLNC DEL 121.7 (When twr closed)	UNICOM 122.95
----------------------------	---	---	-------------------------	--------------------------	---	-------------------------



ELEV 543	TDZE 518
1500	3000
hdg 090°	BNA R-127
CUYAG BNA 18.6	VGSI and ILS glidepath not coincident (VGSI Angle 3.00/TCH 57).
*LOC only	One Minute Holding Pattern
JOPIV INT BNA 23.8	OXCUB BNA 16.5
UJIVA BNA 13.5	BNA 11.7
*BNA 12.7	*1100
0.9 NM	0.9 NM
3 NM	7.3 NM
CATEGORY	A B C D
S-ILS 32	718-½ 200 (200-½)
S-LOC 32	880-½ 362 (400-½) 880-⅝ 362 (400-⅝)
CIRCLING	1100-1 1200-1 1260-2 1480-2¾
	557 (600-1) 657 (700-1) 717 (800-2) 937 (1000-2¾)

SE-1, 31 DEC 2020 to 28 JAN 2021

SE-1, 31 DEC 2020 to 28 JAN 2021