

WAAS CH 86632 W01A	APP CRS 006°	Rwy Idg 5546 TDZE 519 Apt Elev 543
--	------------------------	---

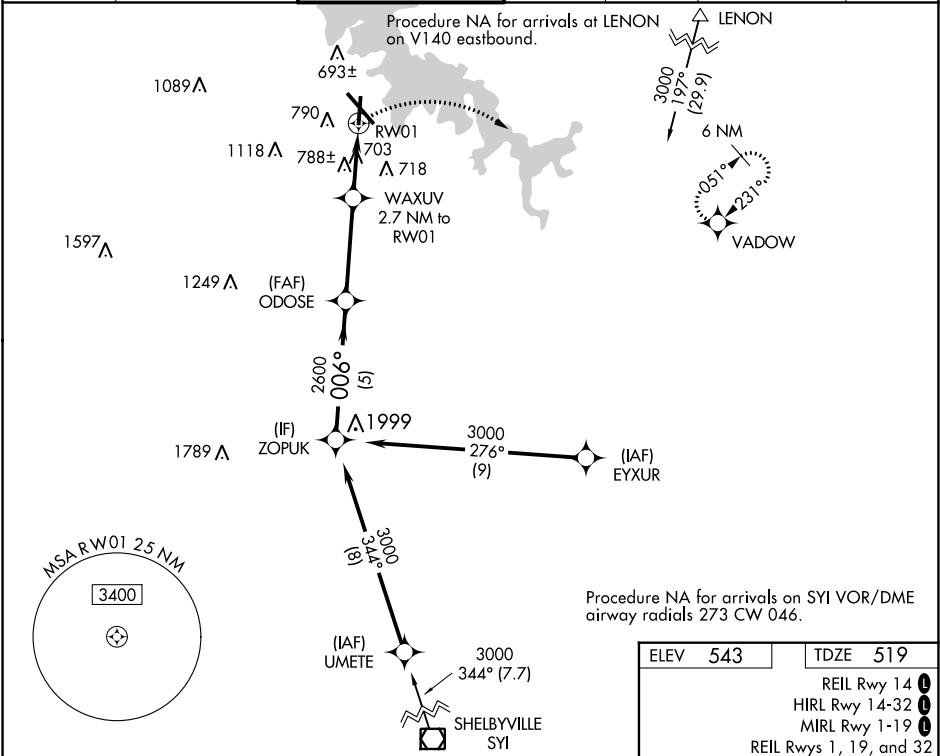
RNAV (GPS) RWY 1

SMYRNA (MQY)

DME/DME RNP-0.3 NA. When local altimeter setting not received, use Nashville Intl altimeter setting and increase all MDA 40. Helicopter visibility reduction below 3/4 SM NA.

MISSED APPROACH: Climbing right turn to 3000 direct VADOW and hold.

AWOS-3PT 119.125	NASHVILLE APP CON 118.4 360.7	SMYRNA TOWER ★ 118.5 (CTAF) 233.1	GND CON 121.4	CLNC DEL 121.4	CLNC DEL 121.7 (When twr closed)	UNICOM 122.95
----------------------------	---	---	-------------------------	--------------------------	---	-------------------------



ZOPUK		VGS1 and descent angles not coincident (VGS1 Angle 3.00/TCH 27).		3000	VADOW
3000		006°	3.00° TCH 45	1.3 NM to RWY 1	
2600		1420			
5 NM		3.7 NM	1.4 NM	1.3	
CATEGORY	A	B	C	D	
LP MDA	960-1	441 (500-1)	960-1 3/8	441 (500-1 3/8)	
LNAV MDA	1100-1	581 (600-1)	1100-1 3/4	581 (600-1 3/4)	
CIRCLING	1100-1 557 (600-1)	1200-1 657 (700-1)	1240-2 697 (700-2)	1480-3 937 (1000-3)	

