
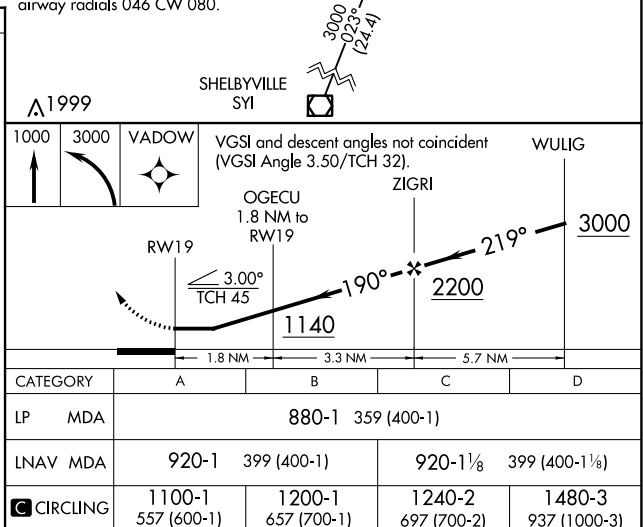
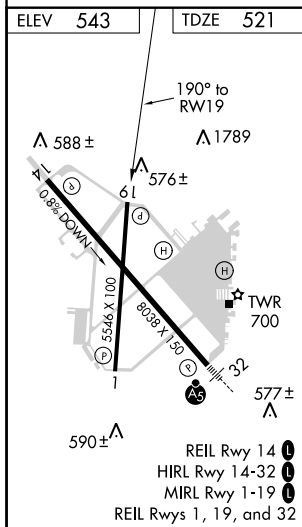
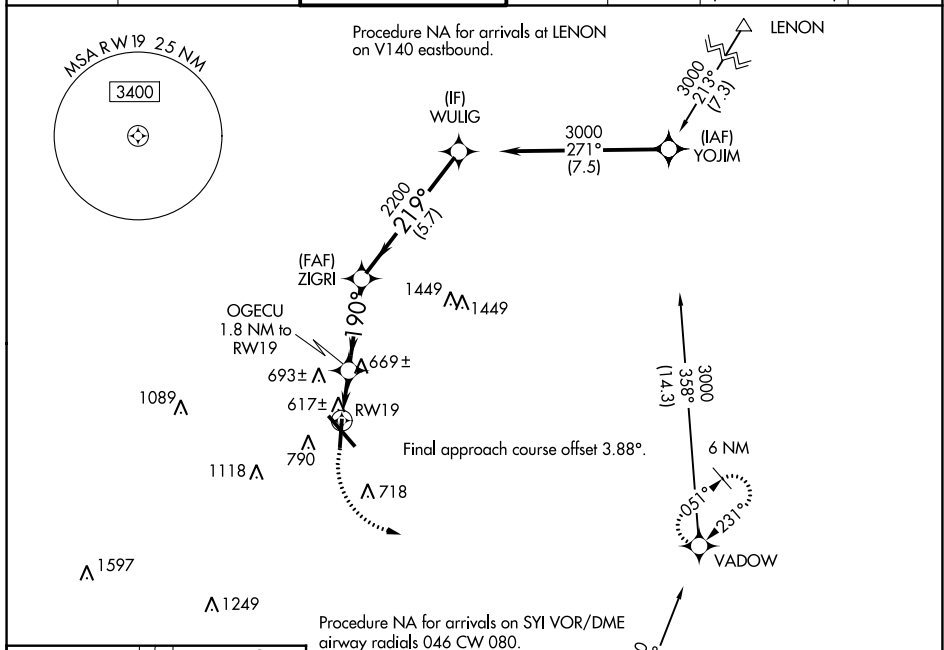


WAAS CH <b>42932</b> <b>W19A</b>	APP CRS <b>190°</b>	Rwy Idg <b>5546</b> TDZE <b>521</b> Apt Elev <b>543</b>
--	------------------------	---

RNAV (GPS) RWY 19  
SMYRNA (MOY)

	DME/DME RNP-0.3 NA: Helicopter visibility reduction below ¾ SM NA. When local altimeter setting not received, use Nashville Infil altimeter setting and increase all MDA 40 feet and increase LP and LNAV Cat C/D visibility ⅛ mile.				MISSED APPROACH: Climb to 1000 then climbing left turn to 3000 direct VADOW and hold.	
	AWOS-3PT 119.125	NASHVILLE APP CON 118.4 360.7	SMYRNA TOWER ★ 118.5 (CTAF) 0 233.1	GND CON 121.4	CLNC DEL 121.4	CLNC DEL 121.7 (When twr closed)



## RNAV (GPS) RWY 19