

WAAS CH 93512 W32A	APP CRS 321°	Rwy Idg 8038 TDZE 518 Apt Elev 543
--	------------------------	---

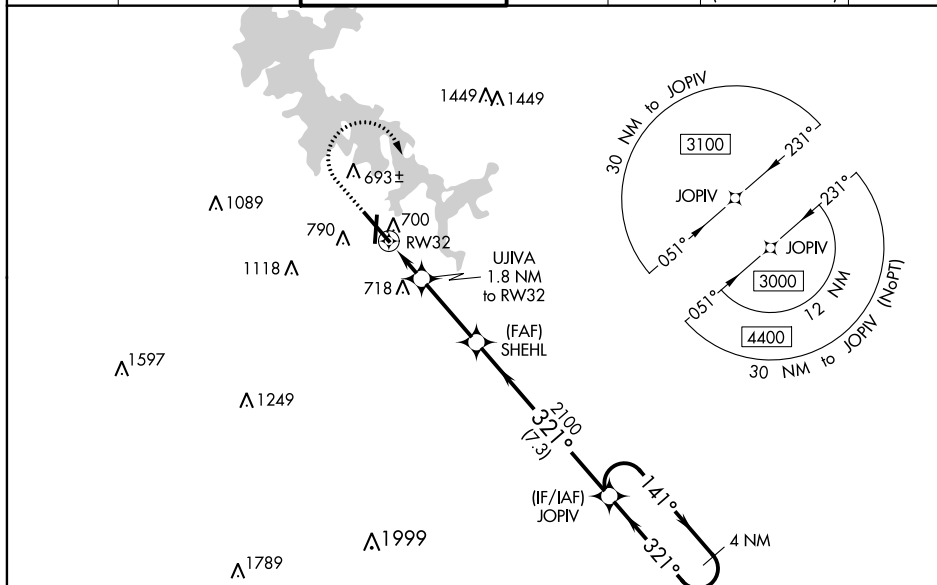
RNAV (GPS) RWY 32
SMYRNA (MQY)

⚠ For uncompensated Baro-VNAV systems, LNAV/VNAV NA below -16°C (4°F) or above 54°C (130°F): DME/DME RNP-0.3 NA. For inop MALSR when using Nashville Intl altimeter setting, increase LNAV/VNAV all Cts visibility to 1½ mile. When local altimeter setting not received, use Nashville Intl altimeter setting and increase LPV DA to 749 feet, LNAV/VNAV DA to 998 feet, and all MDA 40 feet; increase LNAV Cts C/D visibility ½ mile and increase Circling Cat C visibility ¼ mile. Baro-VNAV and VDP NA when using Nashville Intl altimeter setting.

MALSR

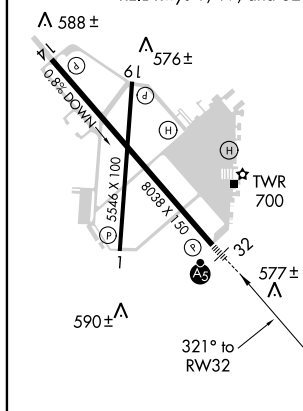
MISSED APPROACH:
Climb to 1500 then
climbing right turn
to 3000 direct JOIV
and hold.

AWOS-3PT 119.125	NASHVILLE APP CON 118.4 360.7	SMYRNA TOWER ★ 118.5 (CTAF) 0 233.1	GND CON 121.4	CLNC DEL 121.4	CLNC DEL 121.7 (When twr closed)	UNICOM 122.95
---------------------	----------------------------------	--	------------------	-------------------	--	------------------



ELEV 543		TDZE 518
----------	--	----------

REIL Rwy 14 **L**
HIRL Rwy 14-32 **L**
MIRL Rwy 1-19 **L**
REIL Rwy 1, 19, and 32



VGSB and RNAV glidepath not coincident (VGSB Angle 3.00/TCH 57).

4 NM Holding Pattern

JOPIV

SHEHL

3000

321°

141°

321°

3.00° TCH 51

GP 3.00° TCH 51

1.2 NM to RW32

0.6 NM

3 NM

7.3 NM

1140

2100

2100

1500

3000

JOPIV

*INAV only

RW32

*1.2 NM to RW32

RNAV (GPS) RWY 32