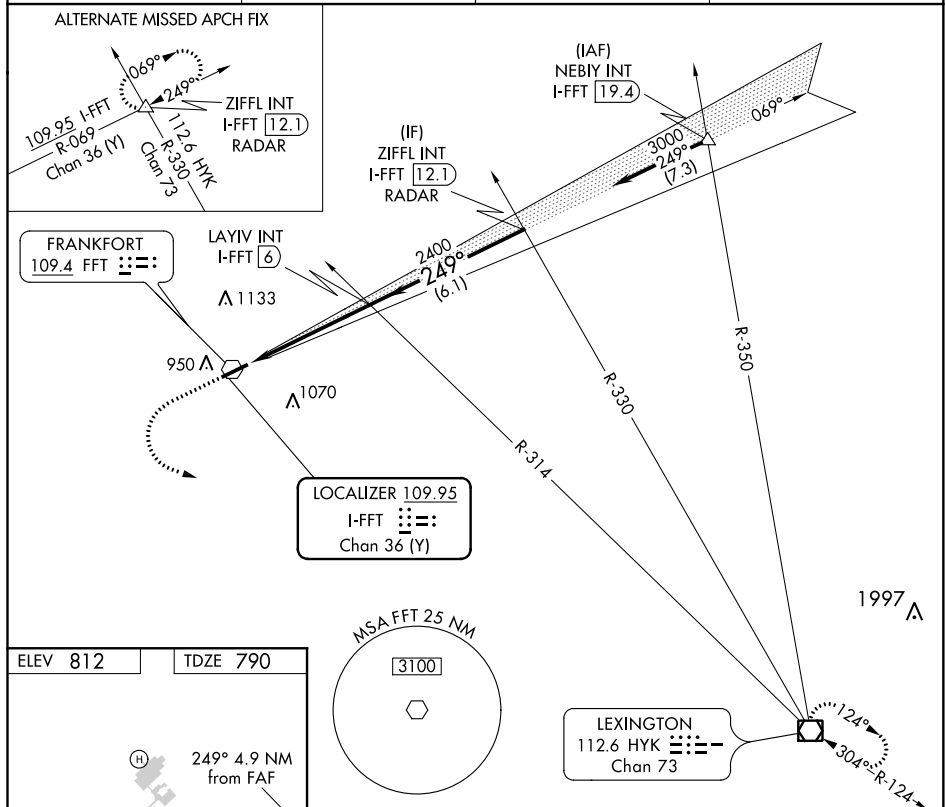


LOC RWY 25
CAPITAL CITY (FET)

MISSED APPROACH: Climb to 3100 then left turn direct HYK VOR/DME and hold.

ASOS 119.275	LEXINGTON APP CON 120.75 298.9	CLNC DEL 118.65	UNICOM 122.8 (CTAF) ①
------------------------	--	---------------------------	---------------------------------



ELEV 812 TDZE 790

249° 4.9 NM from FAF

5506 X 100

0.5% UP

25°


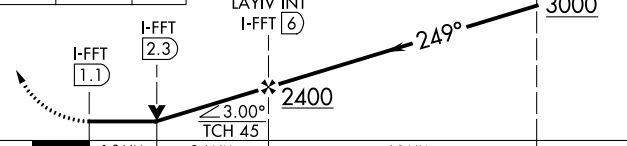

V

☆

MIRL Rwy 7-25

REIL Rwys 7 and 25

FAF to MAP 4.9 NM					
Knots	60	90	120	150	180
Min:Sec	4:54	3:16	2:27	1:58	1:38

3100 ↑	HYK 	VGSI and descent angles not coincident (VGSI Angle 3.50/TCH 31).		ZIFFL INT I-FFT <u>12.1</u> RADAR
				
CATEGORY	A	B	C	D
S-25	1280-1	490 (500-1)	1280-1 $\frac{3}{8}$	490 (500-1 $\frac{3}{8}$)
 CIRCLING	1280-1 468 (500-1)	1380-1 568 (600-1)	1440-1 $\frac{3}{4}$ 628 (700-1 $\frac{3}{4}$)	1440-2 628 (700-2)

SE-1, 31 DEC 2020 to 28 JAN 2021