

WAAS  
CH **77909**  
**W27A**

APP CRS  
**269°**

Rwy Idg  
TDZE  
**387**

Apt Elev  
**387**

**RNAV (GPS) RWY 27**  
HENDERSON CITY-COUNTY (EHR)

RNP APCH.

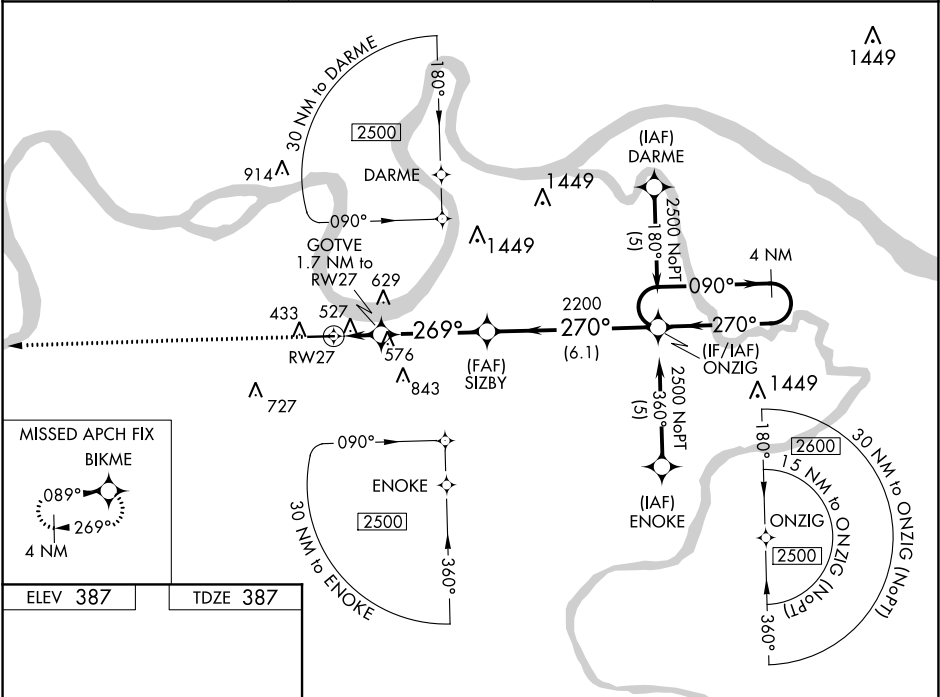
▼

▲

Baro-VNAV NA when using Evansville altimeter setting. For uncompensated Baro-VNAV systems, LNAV/VNAV NA below -15°C or above 48°C. Rwy 27 helicopter visibility reduction below ¾ SM NA. When local altimeter setting not received, use Evansville altimeter setting and increase all DA 41 feet and all MDA 60 feet and LPV all Cats, LNAV/VNAV all Cats and LNAV Cats C/D visibilities ¼ mile.

MISSED APPROACH: Climb to 2500 direct BIKME and hold.

AWOS-3PT <b>118.85</b>	EVANSVILLE APP CON ★ <b>124.025 257.8</b>	UNICOM <b>122.8</b> (CTAF) <b>0</b>
---------------------------	--	--



ELEV 387

TDZE 387

2500

BIKME

\*LNAV only

GOTVE 1.7 NM to RW27

269°

270°

960\*

2200

1.7 NM

3.8 NM

6.1 NM

ONZIG

4 NM Holding Pattern

090°

270°

2500

GP 3.00° TCH 40

CATEGORY	A	B	C	D
LPV DA	733-1¼ 346 (400-1¼)			
LNAV/VNAV DA	827-1½ 440 (500-1½)			
LNAV MDA	840-1	453 (500-1)	840-1¾ 453 (500-1¾)	840-1½ 453 (500-1½)