

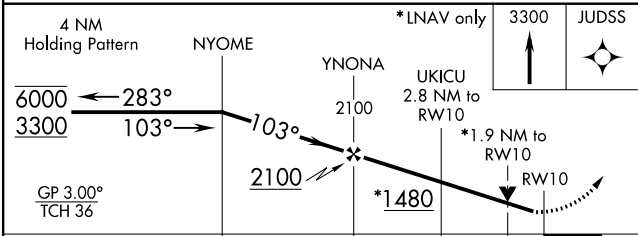
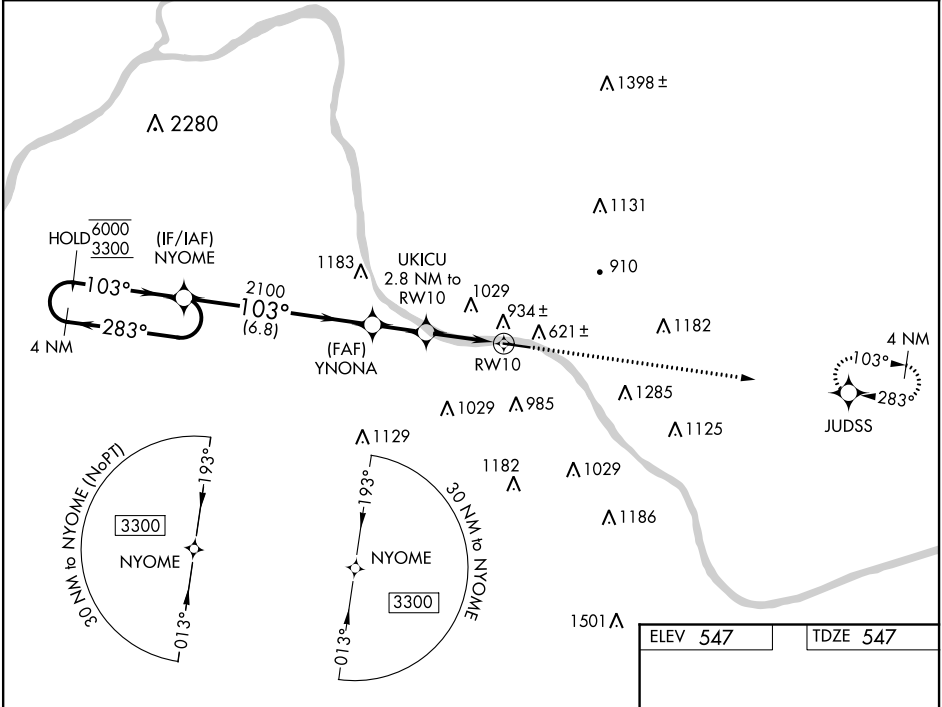
WAAS CH 72723 W10A	APP CRS 103°	Rwy ldg TDZE 547 Apt Elev 547
--	------------------------	---

RNAV (GPS) RWY 10

ASHLAND RGNL (DWU)

RNP APCH.	MISSED APPROACH: Climb to 3300 direct JUDSS and hold, continue climb-in-hold to 3300.
Rwy 10 helicopter visibility reduction below ¾ SM NA. For uncompensated Baro-VNAV systems, LNAV/VNAV NA below -16°C or above 54°C.	

AWOS-3PT 132.425	HUNTINGTON APP CON 128.4 270.1	CLNC DEL 121.7	UNICOM 122.8 (CTAF)
----------------------------	--	--------------------------	-------------------------------



ELEV 547	TDZE 547
MIRL Rwy 10-28	
REIL Rwy 10 and 28	

CATEGORY	A	B	C	D
LPV DA		799-1	252 (300-1)	
LNAV/VNAV DA		1095-1½	548 (600-1½)	
LNAV MDA	1200-1	653 (700-1)	1200-1½	653 (700-1½)
CIRCLING	1300-1 753 (800-1)	1380-1¼ 833 (900-1¼)	1380-2½ 833 (900-2½)	1420-2¾ 873 (900-2¾)