

VOR/DME EWO <b>110.8</b> Chan <b>45</b>	APP CRS <b>132°</b>	Rwy Idg TDZE Apt Elev <b>N/A</b> <b>N/A</b> <b>921</b>
---	------------------------	---

VOR/DME-A

TAYLOR COUNTY (AAS)

⚠

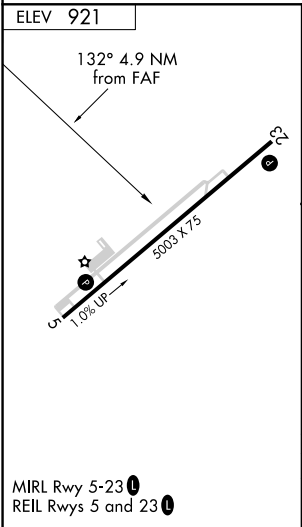
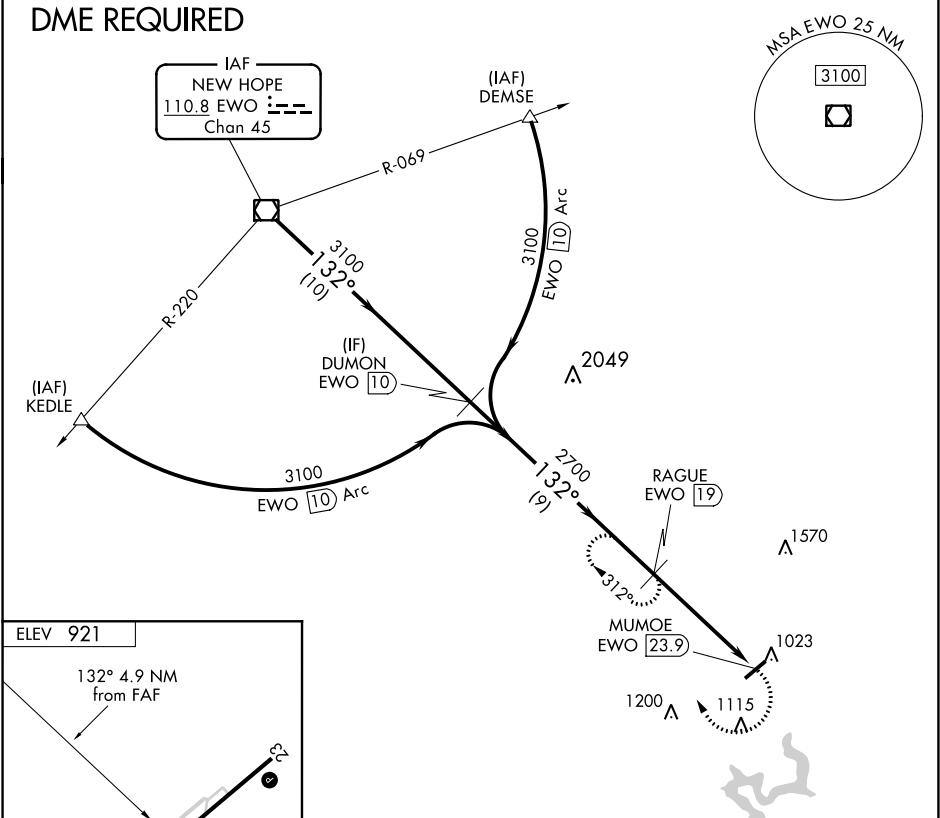
NA

When local altimeter setting not received, use Somerset altimeter setting: increase all MDA 100 feet; increase Cat C visibility ¼ mile and Cat D visibility ½ mile.

MISSED APPROACH: Climbing right turn to 3100 on heading 360° and on EWO R-132 to RAGUE/19 DME and hold.

AWOS-3 <b>121.125</b>	INDIANAPOLIS CENTER <b>121.175 353.65</b>	UNICOM <b>122.7 (CTAF) 0</b>
--------------------------	--	---------------------------------

DME REQUIRED



EWO VOR/DME	DUMON EWO 10	3100	EWO R-132	RAGUE EWO 19	MUMOE EWO 23.9
3100	3100	2700			
10 NM	9 NM	4.9 NM			
CATEGORY	A	B	C	D	
CIRCLING	1540-1	619 (700-1)	1540-1¾ 619 (700-1¾)	1660-2¼ 739 (800-2¼)	