

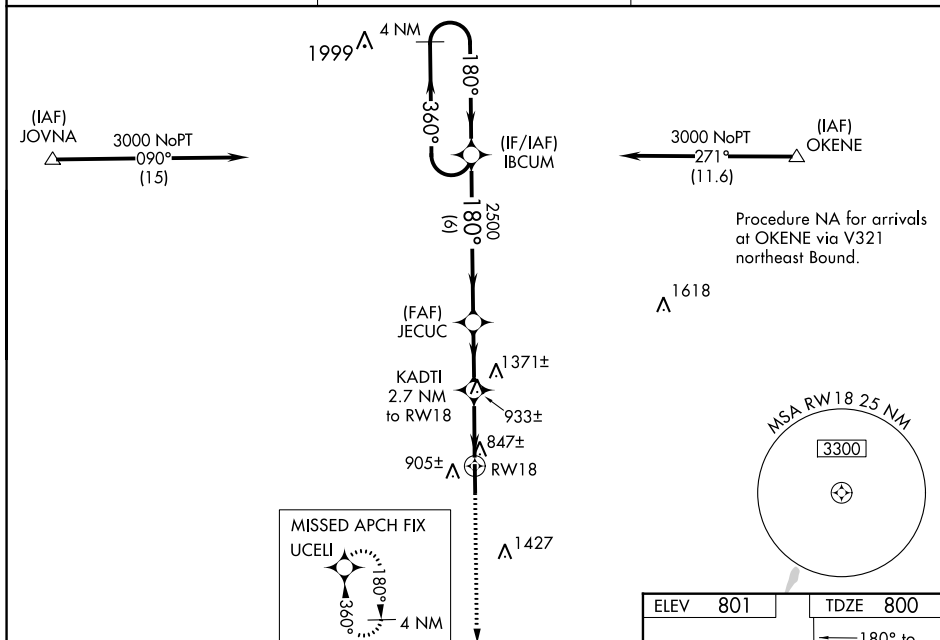
WAAS CH 50407 W18A	APP CRS 180°	Rwy Idg 5503 TDZE 800 Apt Elev 801
--	------------------------	---

RNAV (GPS) RWY 18
BOMAR FIELD-SHELBYVILLE MUNI (SYT)

T When local altimeter setting not received, use Tullahoma altimeter setting and increase LPV DA to 1123, LNAV/VNAV DA to 1389, all MDA 80 feet, increase LPV all Cats visibility $\frac{1}{2}$ SM, LNAV/VNAV all Cats visibility $\frac{1}{4}$ SM and LNAV Cat C and D visibility $\frac{1}{2}$ SM. Baro-VNAV NA when using Tullahoma altimeter setting. For uncompensated Baro-VNAV systems, LNAV/VNAV NA below -16°C (4°F) or above 47°C (116°F). DME/DME RNP-0.3 NA. VDP NA when using Tullahoma altimeter setting.

MISSED APPROACH:
Climb to 3000 direct
UCEU and hold.

AWOS-3 119.275	MEMPHIS CENTER 128.15 323.125	UNICOM 122.8 (CTAF) 0
--------------------------	---	---------------------------------



4 NM Holding Pattern

VGS1 and RNAV glidepath not coincident (VGS1 Angle 3.00/TCH 13).

3000

360°

180°

180°

IBCUM

JECUC

KADTI 2.7 NM to RW18

*1.5 NM to RW18

RW18

GP 3.00° TCH 45°

2500

*1700

6 NM

2.4 NM

1.2 NM

1.5 NM

3000

UCEL1

*RNAV only.