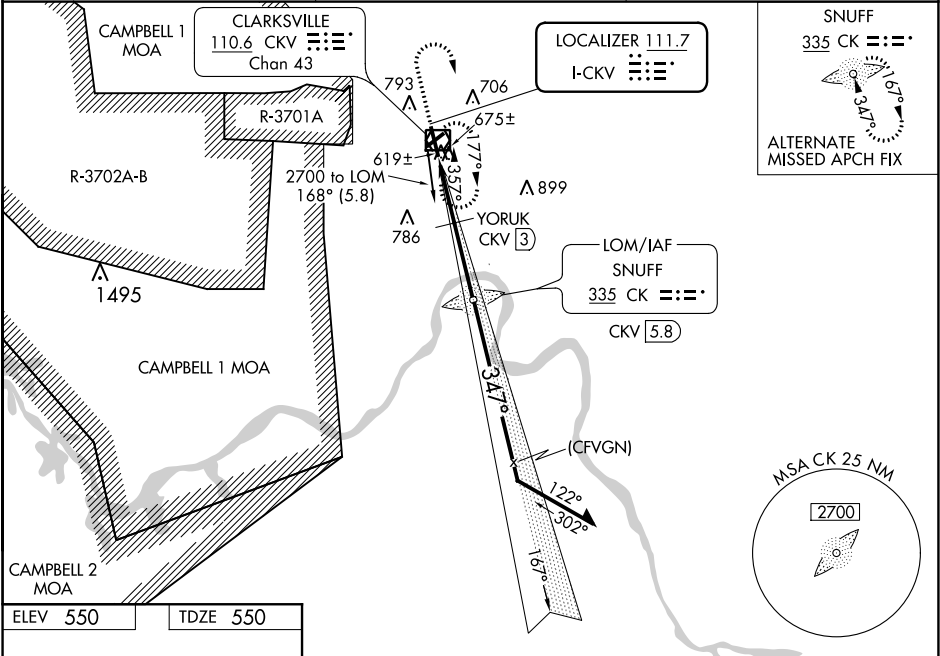


LOC I-CKV <b>111.7</b>	APP CRS <b>347°</b>	Rwy Idg TDZE Apt Elev	<b>5999</b> <b>550</b> <b>550</b>
---------------------------	------------------------	-----------------------------	---

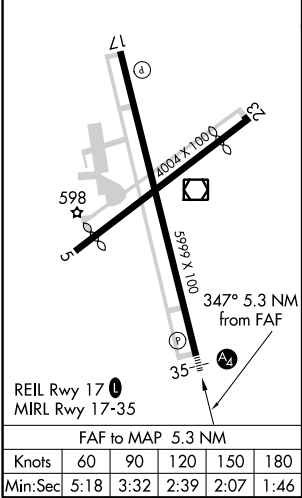
LOC RWY 35  
OUTLAW FIELD (CKV)

ADF required. RADAR required.	MALS	MISSED APPROACH: Climb to 1800 then climbing right turn to 2200 direct CKV VOR/DME and hold.
 Circling NA W of Rwy 17-35. Circling Rwy 23 NA at night. Rwy 35 helicopter visibility reduction below 3/4 SM NA. When local altimeter setting not received, use Campbell AAF (Fort Campbell) altimeter setting. *DME from CKV VOR/DME.	 A	

ASOS <b>134.575</b>	CAMPBELL APP CON <b>134.35 307.025</b>	UNICOM <b>122.8 (CTAF) 0</b>
------------------------	---	---------------------------------



ELEV 550	TDZE 550
----------	----------



1800	2200	CKV	CK LOM CKV [5.8]	Remain within 10 NM
		YORUK CKV [3]		167°
		CKV [0.5]		347°
		1080	2300	2700
		2.5 NM	2.8 NM	
CATEGORY	A	B	C	D
S-LOC 35	1080-3/4	530 (600-3/4)	1080-1 1/4	530 (600-1 1/4)
CIRCLING	1080-1	530 (600-1)	1080-1 1/2	1200-2
			530 (600-1 1/2)	650 (700-2)
YORUK FIX MINIMUMS * (DME REQUIRED)				
S-LOC 35	880-3/4	330 (400-3/4)		
CIRCLING	1000-1	1020-1	1020-1 1/2	1200-2
	450 (500-1)	470 (500-1)	470 (500-1 1/2)	650 (700-2)

SE-1, 31 DEC 2020 to 28 JAN 2021

SE-1, 31 DEC 2020 to 28 JAN 2021