

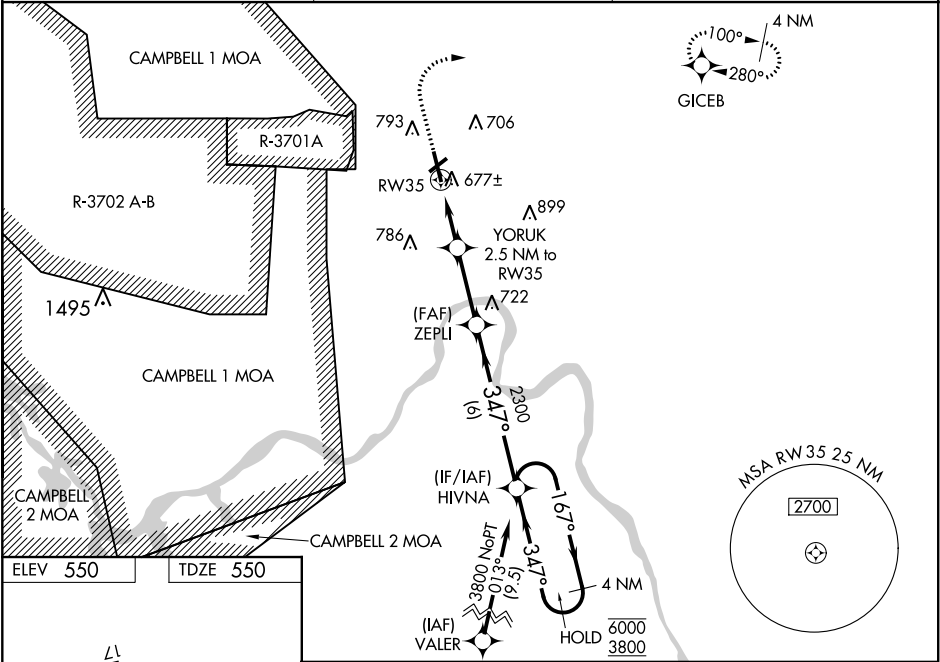
WAAS CH 58300 W35A	APP CRS 347°	Rwy Idg 5999 TDZE 550 Apt Elev 550
--	------------------------	---

RNAV (GPS) RWY 35

OUTLAW FIELD (CKV)

RNP APCH.	MALS 	MISSED APPROACH: Climb to 1000 then climbing right turn to 3000 direct GICEB and hold.
<p>⚠ Circling Rwy 23 NA at night. Baro-VNAV and VDP NA when using Campbell AAF (Fort Campbell) altimeter setting. Rwy 35 helicopter visibility reduction below ¾ SM NA. Inop table does not apply to LPV all Cats. For uncompensated Baro-VNAV systems, LNAV/VNAV NA below -13°C or above 54°C. Circling NA W of Rwy 17-35. For inop ALS, increase LNAV/VNAV all Cats visibility to ¾ SM. When local altimeter setting not received, use Campbell AAF (Fort Campbell) altimeter setting.</p>		

ASOS 134.575	CAMPBELL APP CON 134.35 307.025	UNICOM 122.8(CTAF) 0
------------------------	---	--------------------------------



REIL Rwy 17
MIRL Rwy 17-35

*LNAV only. *1.1 NM to RW35		*1380 *1.1 NM to RW35			
		HIVNA 167° 6000 347° 3800 4 NM Holding Pattern GP 3.00° TCH 50			
CATEGORY		A	B	C	D
LPV DA		805-¾ 255 (300-¾)			
LNAV/VNAV DA		838-¾ 288 (300-¾)			
LNAV MDA		940-¾ 390 (400-¾)		940-7/8 390 (400-7/8)	
C CIRCLING		1000-1 450 (500-1)	1020-1 470 (500-1)	1020-1½ 470 (500-1½)	1200-2 650 (700-2)