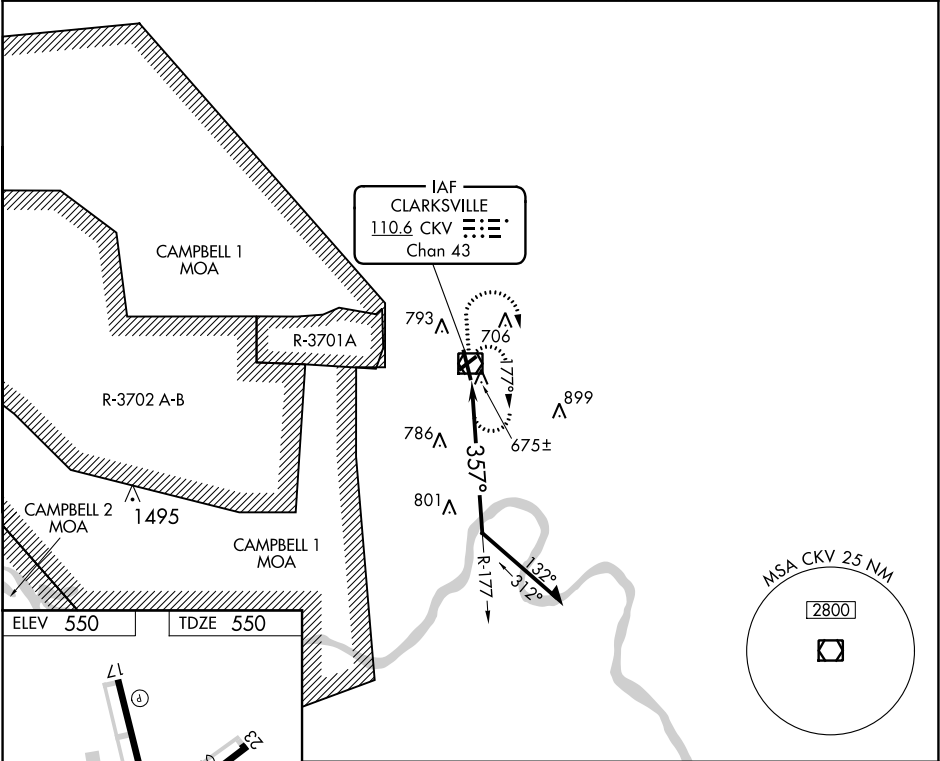


VOR/DME CKV	APP CRS	Rwy Idg	5999
110.6	357°	TDZE	550
Chan 43		Apt Elev	550

VOR RWY 35
OUTLAW FIELD (CKV)

RADAR required for procedure entry.	MALS	MISSED APPROACH: Climb to 1500 then climbing right turn to 2200 direct CKV VOR/DME and hold.
<p>⚠ Circling NA W of Rwy 17-35. Circling Rwy 23 NA at night. Rwy 35 helicopter visibility reduction below ¾ SM NA. When local altimeter setting not received, use Campbell AAF (Fort Campbell) altimeter setting.</p>	<p>⚠</p>	

ASOS 134.575	CAMPBELL APP CON 134.35 307.025	UNICOM 122.8 (CTAF) ⚠
-----------------	------------------------------------	--------------------------



	<p>1500</p> <p>2200</p> <p>CKV</p>	<p>CKV VOR/DME</p> <p>177°</p> <p>2300</p> <p>357°</p> <p>1.6 NM</p>	Remain within 10 NM
REIL Rwy 17 MIRL Rwy 17-35			
CLARKSVILLE, TENNESSEE			
Amdt 15H 20JUN19			
36°37'N-87°25'W			
OUTLAW FIELD (CKV)			
VOR RWY 35			

SE-1, 31 DEC 2020 to 28 JAN 2021

SE-1, 31 DEC 2020 to 28 JAN 2021