

WAAS CH <b>53328</b> <b>W01A</b>	APP CRS <b>006°</b>	Rwy Idg TDZE Apt Elev	<b>6503</b> <b>346</b> <b>346</b>
--	------------------------	-----------------------------	---

RNAV (GPS) RWY 1

EVERETT-STEWART RGNL (UCY)

▼

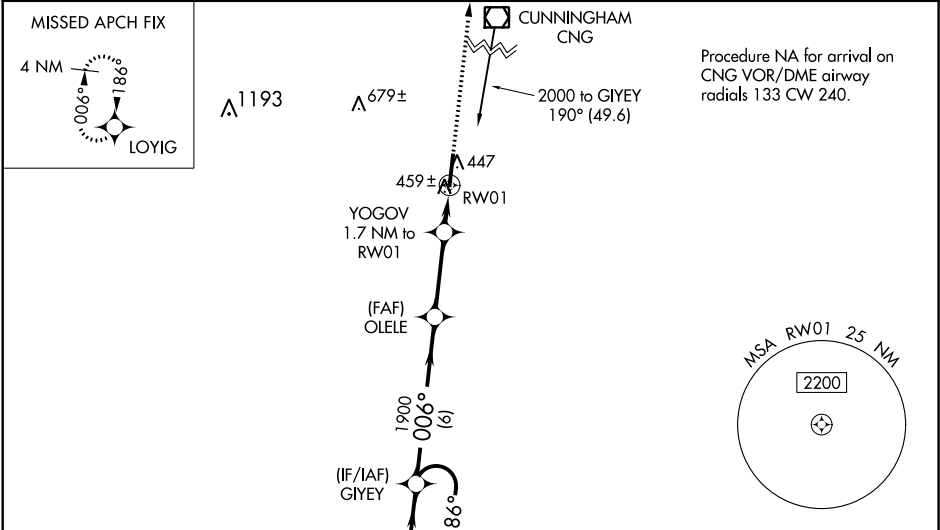
NA

For uncompensated Baro-VNAV systems, LNAV/VNAV NA below -15°C (5°F) or above 54°C (130°F). DME/DME RNP-0.3 NA. VDP and Baro-VNAV NA when using Dyersburg altimeter setting. When local altimeter setting not received, use Dyersburg altimeter setting and increase all DA 72 feet and all MDA 80 feet, increase LNAV/VNAV all Cats visibility to 1½ SM, LNAV Cat C/D visibility to 1½ SM, and Circling Cat D visibility to 2½ SM. For inoperative ALS, increase LNAV/VNAV and LNAV all Cats visibility to 1 SM. For inoperative ALS when using Dyersburg altimeter setting, increase LPV all Cats visibility to ¾ SM, LNAV/VNAV all Cats visibility to 1¼ SM, and LNAV Cat D visibility to 1¾ SM. Inoperative table does not apply to LPV all Cats and LNAV Cats C/D.

ODALS

MISSED APPROACH: Climb to 2900 direct LOYIG and hold.

AWOS-3 <b>135.325</b>	MEMPHIS CENTER <b>133.65 292.15</b>	UNICOM <b>122.7 (CTAF) 0</b>
--------------------------	--	---------------------------------



ELEV 346

TDZE 346

4 NM Holding Pattern

GIYGY

OLELE

YOGOV 1.7 NM to RW01

RW01

2900

LOYIG

GP 3.00° TCH 42

1900

\*920

\*1 NM to RW01

\*LNAV only

CATEGORY	A	B	C	D
LPV DA	546-¾ 200 (200-¾)			
LNAV/VNAV DA	640-⅞ 294 (300-⅞)			
LNAV MDA	720-¾ 374 (400-¾)	720-1 374 (400-1)		
CIRCLING	760-1 414 (500-1)	800-1 454 (500-1)	820-1½ 474 (500-1½)	1020-2¼ 674 (700-2¼)

6 NM Holding Pattern

GIYGY

OLELE

YOGOV 1.7 NM to RW01

RW01

2900

LOYIG

GP 3.00° TCH 42

1900

\*920

\*1 NM to RW01

\*LNAV only

6 NM Holding Pattern

GIYGY

OLELE

YOGOV 1.7 NM to RW01

RW01

2900

LOYIG

GP 3.00° TCH 42

1900

\*920

\*1 NM to RW01

\*LNAV only

6 NM Holding Pattern

GIYGY

OLELE

YOGOV 1.7 NM to RW01

RW01

2900

LOYIG

GP 3.00° TCH 42

1900

\*920

\*1 NM to RW01

\*LNAV only

6 NM Holding Pattern

GIYGY

OLELE

YOGOV 1.7 NM to RW01

RW01

2900

LOYIG

GP 3.00° TCH 42

1900

\*920

\*1 NM to RW01

\*LNAV only

6 NM Holding Pattern

GIYGY

OLELE

YOGOV 1.7 NM to RW01

RW01

2900

LOYIG

GP 3.00° TCH 42

1900

\*920

\*1 NM to RW01

\*LNAV only

6 NM Holding Pattern

GIYGY

OLELE

YOGOV 1.7 NM to RW01

RW01

2900

LOYIG

GP 3.00° TCH 42

1900

\*920

\*1 NM to RW01

\*LNAV only

6 NM Holding Pattern

GIYGY

OLELE

YOGOV 1.7 NM to RW01

RW01

2900

LOYIG

GP 3.00° TCH 42

1900

\*920

\*1 NM to RW01

\*LNAV only

6 NM Holding Pattern

GIYGY

OLELE

YOGOV 1.7 NM to RW01

RW01

2900

LOYIG

GP 3.00° TCH 42

1900

\*920

\*1 NM to RW01

\*LNAV only

6 NM Holding Pattern

GIYGY

OLELE

YOGOV 1.7 NM to RW01

RW01

2900

LOYIG

GP 3.00° TCH 42

1900

\*920

\*1 NM to RW01

\*LNAV only

6 NM Holding Pattern

GIYGY

OLELE

YOGOV 1.7 NM to RW01

RW01

2900

LOYIG

GP 3.00° TCH 42

1900

\*920

\*1 NM to RW01

\*LNAV only

6 NM Holding Pattern

GIYGY

OLELE

YOGOV 1.7 NM to RW01

RW01

2900

LOYIG

GP 3.00° TCH 42

1900

\*920

\*1 NM to RW01

\*LNAV only

6 NM Holding Pattern

GIYGY

OLELE

YOGOV 1.7 NM to RW01

RW01

2900

LOYIG

GP 3.00° TCH 42

1900

\*920

\*1 NM to RW01

\*LNAV only

6 NM Holding Pattern

GIYGY

OLELE

YOGOV 1.7 NM to RW01

RW01

2900

LOYIG

GP 3.00° TCH 42

1900

\*920

\*1 NM to RW01

\*LNAV only

6 NM Holding Pattern

GIYGY

OLELE

YOGOV 1.7 NM to RW01

RW01

2900

LOYIG

GP 3.00° TCH 42

1900

\*920

\*1 NM to RW01

\*LNAV only

6 NM Holding Pattern

GIYGY

OLELE

YOGOV 1.7 NM to RW01

RW01

2900

LOYIG

GP 3.00° TCH 42

1900

\*920

\*1 NM to RW01

\*LNAV only

6 NM Holding Pattern

GIYGY

OLELE

YOGOV 1.7 NM to RW01

RW01

2900

LOYIG

GP 3.00° TCH 42

1900

\*920

\*1 NM to RW01

\*LNAV only

6 NM Holding Pattern

GIYGY

OLELE

YOGOV 1.7 NM to RW01

RW01

2900

LOYIG

GP 3.00° TCH 42

1900

\*920

\*1 NM to RW01

\*LNAV only

6 NM Holding Pattern

GIYGY

OLELE

YOGOV 1.7 NM to RW01

RW01

2900

LOYIG

GP 3.00° TCH 42

1900

\*920

\*1 NM to RW01

\*LNAV only

6 NM Holding Pattern

GIYGY

OLELE

YOGOV 1.7 NM to RW01

RW01

2900

LOYIG

GP 3.00° TCH 42

1900

\*920

\*1 NM to RW01

\*LNAV only

6 NM Holding Pattern

GIYGY

OLELE

YOGOV 1.7 NM to RW01

RW01

2900

LOYIG

GP 3.00° TCH 42

1900

\*920

\*1 NM to RW01

\*LNAV only

6 NM Holding Pattern

GIYGY

OLELE

YOGOV 1.7 NM to RW01

RW01

2900

LOYIG

GP 3.00° TCH 42

1900

\*920

\*1 NM to RW01

\*LNAV only

6 NM Holding Pattern

GIYGY

OLELE

YOGOV 1.7 NM to RW01

RW01

2900

LOYIG

GP 3.00° TCH 42

1900

\*920

\*1 NM to RW01

\*LNAV only

6 NM Holding Pattern

GIYGY

OLELE

YOGOV 1.7 NM to RW01

RW01

2900

LOYIG

GP 3.00° TCH 42

1900

\*920

\*1 NM to RW01

\*LNAV only

6 NM Holding Pattern

GIYGY

OLELE

YOGOV 1.7 NM to RW01

RW01

2900

LOYIG

GP 3.00° TCH 42

1900

\*920

\*1 NM to RW01

\*LNAV only

6 NM Holding Pattern

GIYGY

OLELE

YOGOV 1.7 NM to RW01

RW01

2900

LOYIG

GP 3.00° TCH 42

1900

\*920

\*1 NM to RW01

\*LNAV only

6 NM Holding Pattern

GIYGY

OLELE

YOGOV 1.7 NM to RW01

RW01

2900

LOYIG

GP 3.00° TCH 42

1900

\*920

\*1 NM to RW01

\*LNAV only

6 NM Holding Pattern

GIYGY

OLELE

YOGOV 1.7 NM to RW01

RW01

2900

LOYIG

GP 3.00° TCH 42

1900

\*920

\*1 NM to RW01

\*LNAV only

6 NM Holding Pattern

GIYGY

OLELE

YOGOV 1.7 NM to RW01

RW01

2900

LOYIG

GP 3.00° TCH 42

1900

\*920

\*1 NM to RW01

\*LNAV only

6 NM Holding Pattern

GIYGY

OLELE

YOGOV 1.7 NM to RW01

RW01

2900

LOYIG

GP 3.00° TCH 42

1900

\*920

\*1 NM to RW01

\*LNAV only

6 NM Holding Pattern

GIYGY

OLELE

YOGOV 1.7 NM to RW01

RW01

2900

LOYIG

GP 3.00° TCH 42

1900

\*920

\*1 NM to RW01

\*LNAV only

6 NM Holding Pattern

GIYGY

OLELE

YOGOV 1.7 NM to RW01

RW01

2900

LOYIG

GP 3.00° TCH 42

1900

\*920

\*1 NM to RW01

\*LNAV only

6 NM Holding Pattern

GIYGY

OLELE

YOGOV 1.7 NM to RW01

RW01

2900

LOYIG

GP 3.00° TCH 42

1900

\*920

\*1 NM to RW01

\*LNAV only

6 NM Holding Pattern

GIYGY

OLELE

YOGOV 1.7 NM to RW01

RW01

2900

LOYIG

GP 3.00° TCH 42

1900

\*920

\*1 NM to RW01

\*LNAV only

6 NM Holding Pattern

GIYGY

OLELE

YOGOV 1.7 NM to RW01

RW01

2900

LOYIG

GP 3.00° TCH 42

1900

\*920

\*1 NM to RW01

\*LNAV only

6 NM Holding Pattern

GIYGY

OLELE

YOGOV 1.7 NM to RW01

RW01

2900

LOYIG

GP 3.00° TCH 42

1900

\*920

\*1 NM to RW01

\*LNAV only

6 NM Holding Pattern

GIYGY

OLELE

YOGOV 1.7 NM to RW01

RW01

2900

LOYIG

GP 3.00° TCH 42

1900

\*920

\*1 NM to RW01

\*LNAV only

6 NM Holding Pattern

GIYGY

OLELE

YOGOV 1.7 NM to RW01

RW01

2900

LOYIG

GP 3.00° TCH 42

1900

\*920

\*1 NM to RW01

\*LNAV only

6 NM Holding Pattern

GIYGY

OLELE

YOGOV 1.7 NM to RW01

RW01

2900

LOYIG

GP 3.00° TCH 42

1900

\*920

\*1 NM to RW01

\*LNAV only

6 NM Holding Pattern

GIYGY

OLELE

YOGOV 1.7 NM to RW01

RW01

2900

LOYIG

GP 3.00° TCH 42

1900

\*920

\*1 NM to RW01

\*LNAV only

6 NM Holding Pattern

GIYGY

OLELE

YOGOV 1.7 NM to RW01

RW01

2900

LOYIG

GP 3.00° TCH 42

1900

\*920

\*1 NM to RW01

\*LNAV only

6 NM Holding Pattern

GIYGY

OLELE

YOGOV 1.7 NM to RW01

RW01

2900

LOYIG

GP 3.00° TCH 42

1900

\*920

\*1 NM to RW01

\*LNAV only

6 NM Holding Pattern

GIYGY

OLELE

YOGOV 1.7 NM to RW01

RW01

2900

LOYIG

GP 3.00° TCH 42

1900

\*920

\*1 NM to RW01

\*LNAV only

6 NM Holding Pattern

GIYGY

OLELE

YOGOV 1.7 NM to RW01

RW01

2900

LOYIG

GP 3.00° TCH 42

1900

\*920

\*1 NM to RW01

\*LNAV only

6 NM Holding Pattern

GIYGY

OLELE

YOGOV 1.7 NM to RW01

RW01

2900

LOYIG

GP 3.00° TCH 42

1900

\*920

\*1 NM to RW01

\*LNAV only

6 NM Holding Pattern

GIYGY

OLELE

YOGOV 1.7 NM to RW01

RW01

2900

LOYIG

GP 3.00° TCH 42

1900

\*920

\*1 NM to RW01

\*LNAV only

6 NM Holding Pattern

GIYGY

OLELE

YOGOV 1.7 NM to RW01

RW01

2900

LOYIG

GP 3.00° TCH 42

1900

\*920

\*1 NM to RW01

\*LNAV only

6 NM Holding Pattern

GIYGY

OLELE

YOGOV 1.7 NM to RW01

RW01

2900

LOYIG

GP 3.00° TCH 42

1900

\*920

\*1 NM to RW01

\*LNAV only

6 NM Holding Pattern

GIYGY

OLELE

YOGOV 1.7 NM to RW01

RW01

2900

LOYIG

GP 3.00° TCH 42

1900

\*920

\*1 NM to RW01

\*LNAV only

6 NM Holding Pattern

GIYGY

OLELE

YOGOV 1.7 NM to RW01

RW01

2900

LOYIG

GP 3.00° TCH 42

1900

\*920

\*1 NM to RW01

\*LNAV only

6 NM Holding Pattern

GIYGY

OLELE