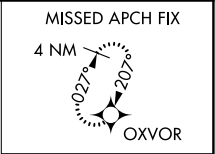
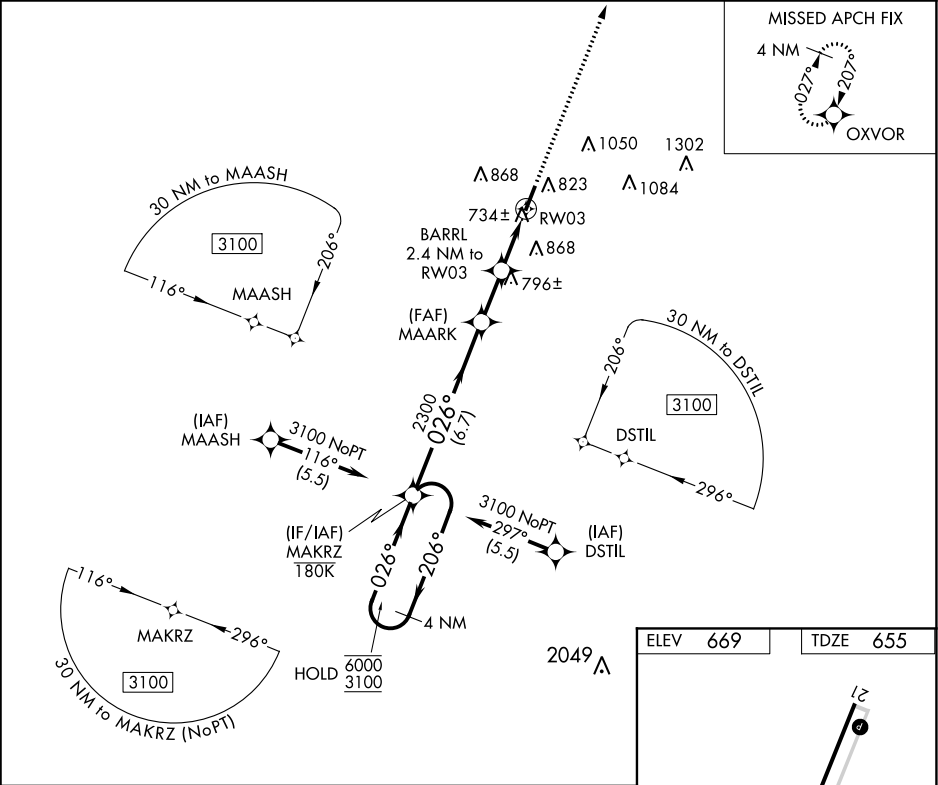


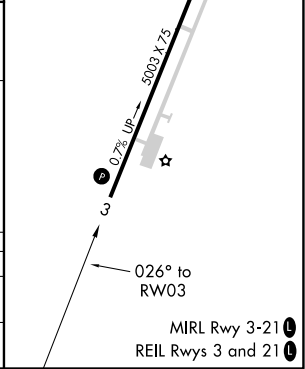
APP CRS	Rwy Idg	5003
026°	TDZE	655
	Apt Elev	669

RNAV (GPS) RWY 3  
SAMUELS FIELD (BRY)

RNP APCH.		MISSED APPROACH: Climb to 3000 direct OXVOR and hold.
<div><div></div><div></div></div> <div>Rwy 3 helicopter visibility reduction below ¾ SM NA.</div>		
AWOS-3 119.925	LOUISVILLE APP CON 132.075 327.0	UNICOM 122.8 (CTAF) 0



4 NM Holding Pattern					MAKRZ	MAARK	BARRL	3000	OXVOR
6000 ← 206° 3100 → 026°					026°	3.50° TCH 41	2.4 NM to RW03	0.9 NM to RW03	
					2300	1560		RW03	
					6.7 NM	2 NM	1.5 NM	0.9 NM	
CATEGORY	A		B		C		D		
LNVA MDA	1000-1 345 (400-1)								
CIRCLING	1200-1 531 (600-1)		1260-1 591 (600-1)		1360-2 691 (700-2)		1480-2¾ 811 (900-2¾)		



SE-1, 31 DEC 2020 to 28 JAN 2021

SE-1, 31 DEC 2020 to 28 JAN 2021