

NDB JXT 346	APP CRS 054°	Rwy Idg TDZE 1313 Apt Elev 1313
-----------------------	------------------------	---

NDB RWY 5
MOORE-MURRELL (MOR)

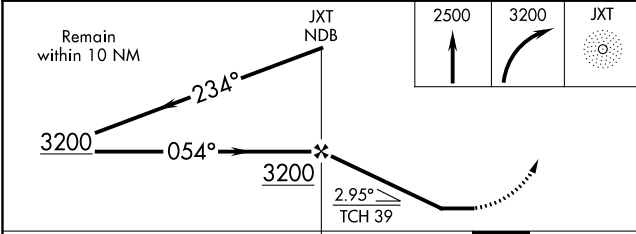
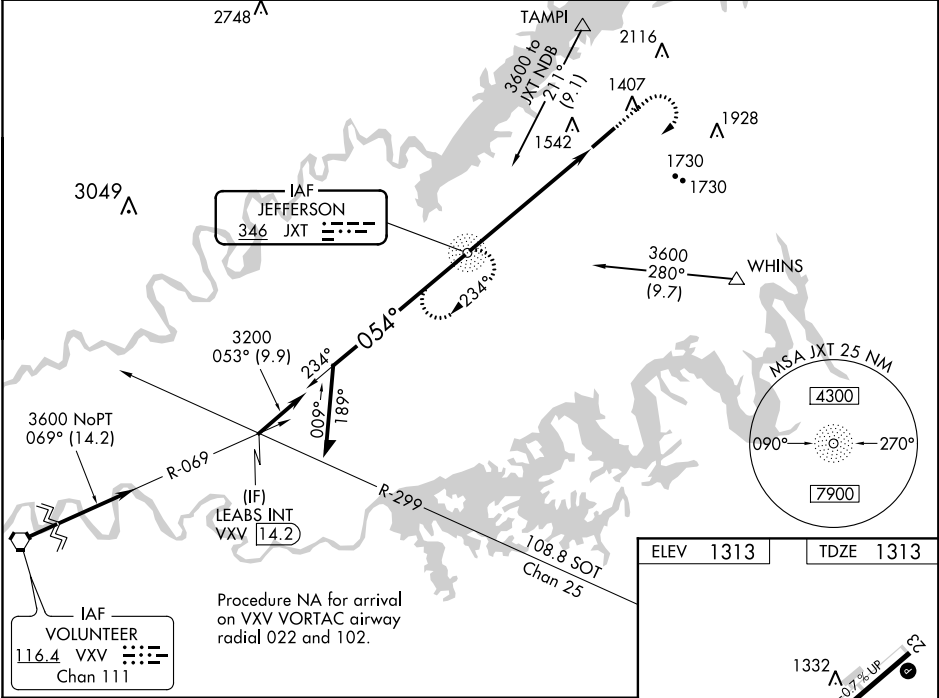
NA
-22°C

When local altimeter setting not received, use Mc Ghee Tyson altimeter setting and increase all MDA 140 feet, S-5 Cats C and D visibility to 2 miles, Circling Cat B visibility to 1¼ miles, Cat C visibility to 2¾ miles and Cat D visibility to 3 miles. For inop MALSF, increase S-5 Cats C and D visibility to 1¾ miles. For inop MALSF, when using Mc Ghee Tyson altimeter setting, increase S-5 Cat B visibility to 1¼ miles and Cats C and D visibility to 2½ miles.

MALSF

MISSED APPROACH:
Climb to 2500 then climbing right turn to 3200 direct JXT NDB and hold.

AWOS-3 126.725	KNOXVILLE APP CON 132.8 360.8	UNICOM 122.8 (CTAF) 0
--------------------------	---	---------------------------------



ELEV 1313	TDZE 1313
REIL Rwy 5-23 MRL Rwy 5-23	
FAF to MAP 5.9 NM	
Knots	60 90 120 150 180
Min:Sec	5:54 3:56 2:57 2:22 1:58

SE-1, 31 DEC 2020 to 28 JAN 2021

SE-1, 31 DEC 2020 to 28 JAN 2021