

SDF MOR <b>109.5</b> Chan <b>32</b>	APP CRS <b>053°</b>	Rwy Idg TDZE <b>1313</b> Apt Elev <b>1313</b>
---	------------------------	---

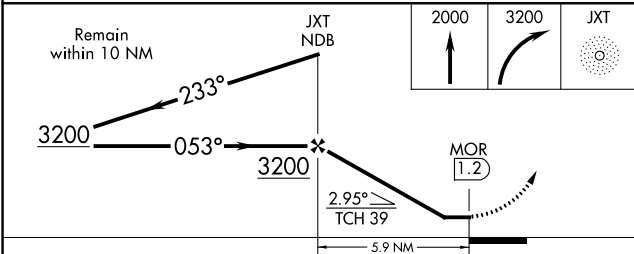
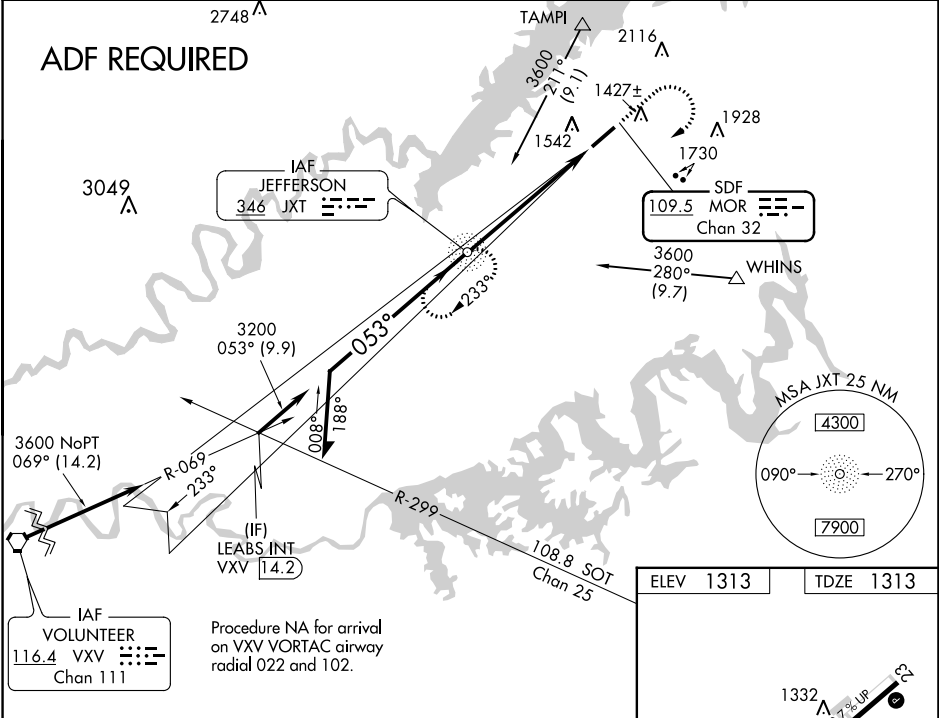
SDF RWY 5  
MOORE-MURRELL (MOR)

**ADF Required.** When local altimeter setting not received, use Mc Ghee Tyson altimeter setting and increase all MDA 140 feet, S-5 Cats C and D visibility to 1¾ miles, Circling Cat C visibility to 2¾ miles, and Circling Cat D visibility to 3 miles. For inop MALSF, increase S-5 Cats C and D visibility to 1½ miles. For inop MALSF, when using Mc Ghee Tyson altimeter setting, increase S-5 Cats C and D visibility to 2 miles.

**MALSF**

**MISSED APPROACH:**  
Climb to 2000 then climbing right turn to 3200 direct JXT NDB and hold.

AWOS-3 <b>126.725</b>	KNOXVILLE APP CON <b>132.8 360.8</b>	UNICOM <b>122.8 (CTAF)</b>
--------------------------	---	-------------------------------



CATEGORY	A	B	C	D	REIL Rwy 5-23 MIRL Rwy 5-23					
S-5	1860-¾ 547 (600-¾)		1860-1⅓ 547 (600-1⅓)		FAF to MAP 5.9 NM					
CIRCLING	1880-1 567 (600-1)	1920-1 607 (700-1)	2060-2¼ 747 (800-2¼)	2180-2¾ 867 (900-2¾)	Knots	60	90	120	150	180
					Min:Sec	5:54	3:56	2:57	2:22	1:58

SE-1, 31 DEC 2020 to 28 JAN 2021

SE-1, 31 DEC 2020 to 28 JAN 2021