

WAAS CH 42717 W20A	APP CRS 196°	Rwy Idg TDZE Apt Elev	5001 571 580
--	------------------------	-----------------------------	---

RNAV (GPS) RWY 20

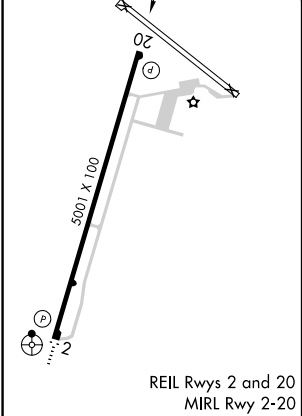
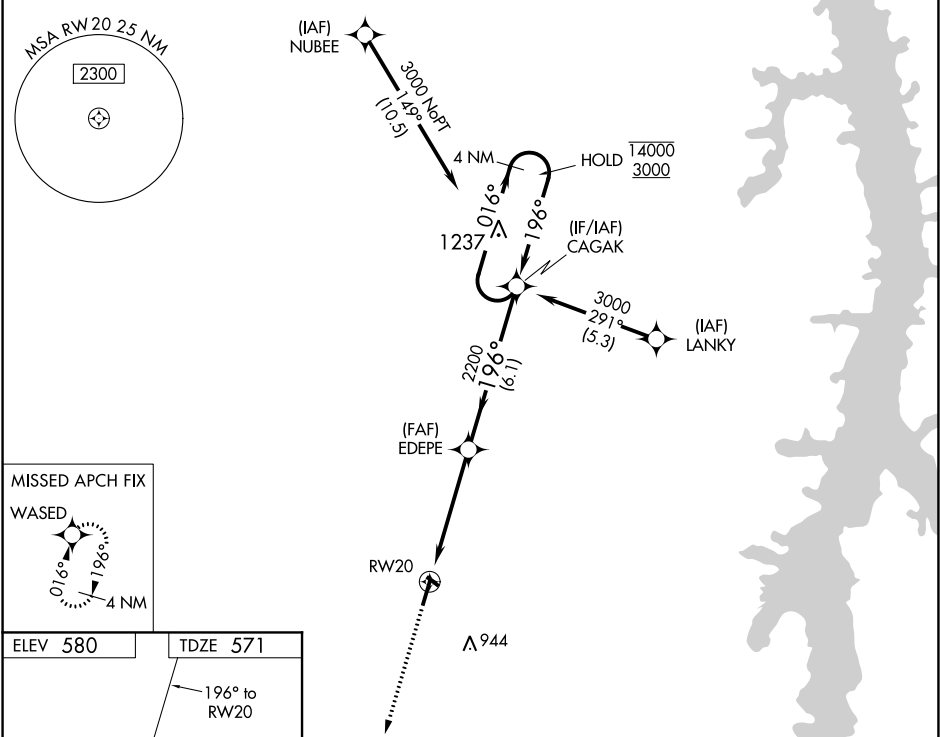
HENRY COUNTY (PHT)

RNP APCH.

When local altimeter setting not received, procedure NA.
For uncompensated Baro-VNAV systems, LNAV/VNAV NA below -16°C or above 54°C.

MISSED APPROACH:
Climb to 2300 direct
WASED and hold.

AWOS-3 118.825	MEMPHIS CENTER 134.65 316.15	UNICOM 123.0 (CTAF)
--------------------------	--	-------------------------------



2300	WASED	VGSI and RNAV glidepath not coincident (VGSI Angle 3.00/TCH 21).			4 NM Holding Pattern
*LNAV only.		EDEPE	2200	196°	016° → 14000 ← 196° 3000
*1.5 NM to RWY 20		RWY 20	2200	196°	GP 3.00° TCH 45
1.5 NM		3.4 NM	6.1 NM		
CATEGORY	A	B	C	D	
LPV DA	821-1		250 (300-1)		
LNAV/VNAV DA	917-1¼		346 (400-1¼)		
LNAV MDA	1060-1	489 (500-1)	1060-1½ 489 (500-1½)	1060-1½ 489 (500-1½)	
CIRCLING	1080-1	500 (500-1)	1080-1½ 500 (500-1½)	1140-2 560 (600-2)	