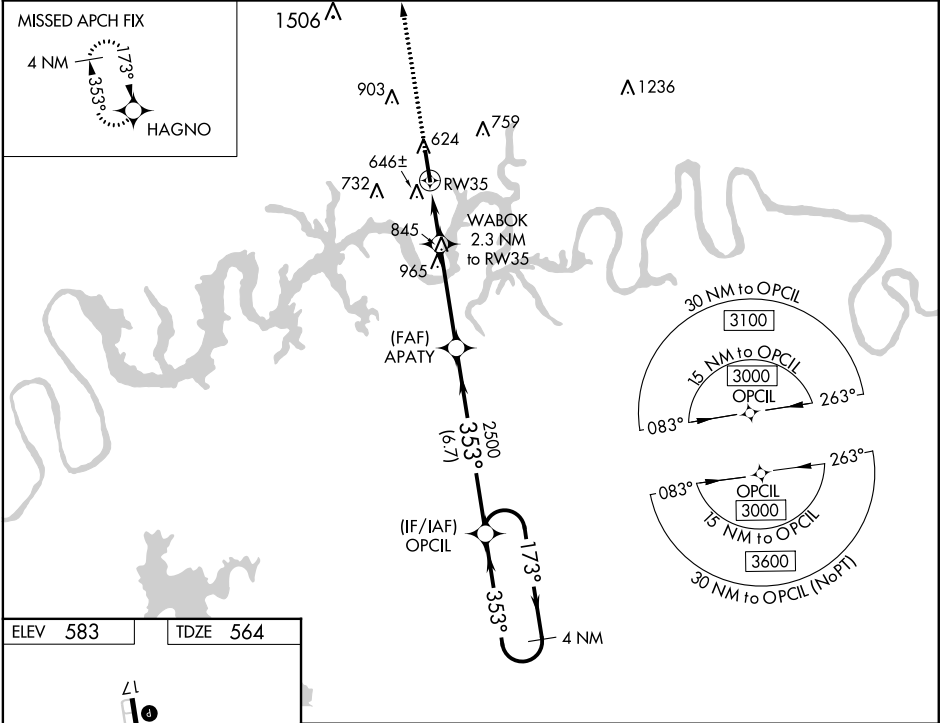


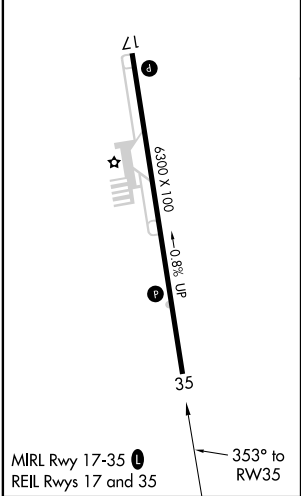
WAAS CH 65627 W35A	APP CRS 353°	Rwy Idg TDZE Apt Elev	6300 564 583
--	------------------------	-----------------------------	---

RNAV (GPS) RWY 35
MUSIC CITY EXECUTIVE (XNX)

RNP APCH. <div>⚠ For uncompensated Baro-VNAV systems, LNAV/VNAV NA below -16°C or above 54°C. Rwy 35 helicopter visibility reduction below ¾ SM NA.</div>			MISSED APPROACH: Climb to 3000 direct HAGNO and hold.
AWOS-3 132.725	NASHVILLE APP CON 118.4 360.7	GCO 135.075	UNICOM 123.05 (CTAF) 0



ELEV 583	TDZE 564
----------	----------



3000	HAGNO				
*LNAV only	WABOK 2.3 NM to RW35	APATY 2500	OPCIL 4 NM Holding Pattern	173° → 3000	GP 3.00° TCH 37
	*1 NM to RW35	*1300	2500	353° ← 3000	
	1 NM	1.3 NM	3.8 NM	6.7 NM	
CATEGORY	A	B	C	D	
LPV DA	814-¾ 250 (300-¾)				
LNAV/VNAV DA	838-⅞ 274 (300-⅞)				
LNAV MDA	900-1 336 (400-1)				
CIRCLING	1100-1 517 (600-1)	1120-1 537 (600-1)	1240-1¾ 657 (700-1¾)	1280-2¼ 697 (700-2¼)	