

APP CRS

021°

Rwy Idg

4002

TDZE

765

Apt Elev

765

RNAV (GPS) RWY 2

CENTERVILLE MUNI (GHM)

⚠

NA

Obtain local altimeter setting on CTAF, when not received, use Columbia/Mount Pleasant altimeter setting and increase all MDA 80 feet. Increase LNAV Cats C and D visibility $\frac{3}{8}$ mile and Circling Cat D $\frac{1}{4}$ mile. DME/DME RNP-0.3 NA. Procedure NA at night. Helicopter visibility reduction below 1 SM NA.

MISSED APPROACH:

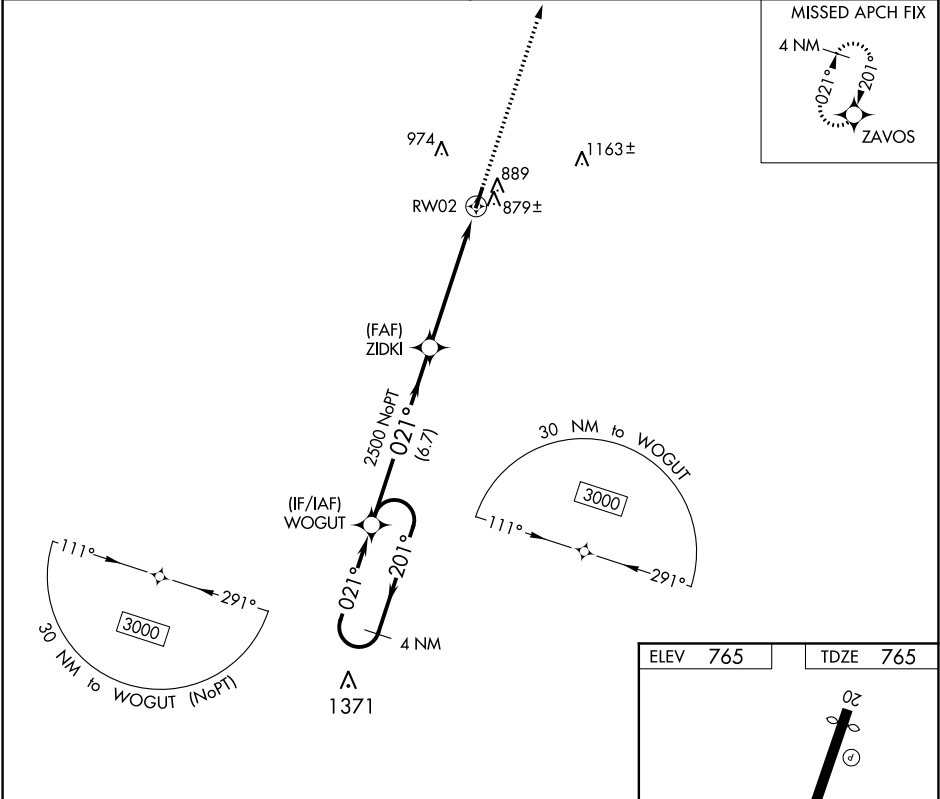
Climb to 3000 direct ZAVOS and hold.

MEMPHIS CENTER

125.85 379.25

UNICOM

122.8 (CTAF) 0



4 NM

Holding Pattern WOGUT

3000

201°

021°

VGSI and descent angles not coincident (VGSI Angle 4.00/TCH 53).

3000

ZAVOS

021°

ZIDKI

2500

3.00°

TCH 40

RW02

6.7 NM

5.3 NM

CATEGORY	A	B	C	D
LNAV MDA	1140-1 375 (400-1)			
CIRCLING	1260-1 495 (500-1)	1280-1½ 515 (600-1½)	1520-2½ 755 (800-2½)	

ELEV 765

TDZE 765

4002 X 75

021° to RW02

MIRL Rwy 2-20

REIL Rwy 2 and 20

SE-1, 31 DEC 2020 to 28 JAN 2021

SE-1, 31 DEC 2020 to 28 JAN 2021