

WAAS CH 69515 W24A	APP CRS 235°	Rwy Idg 6000 TDZE 681 Apt Elev 681
--	------------------------	---

RNAV (GPS) RWY 24
MAURY COUNTY (MRC)

RNP APCH

▼ Inop table does not apply to LNAV/VNAV Cats A, B, and C and LNAV Cat C. For uncompensated Baro-VNAV systems, LNAV/VNAV NA below -16°C or above 47°C.

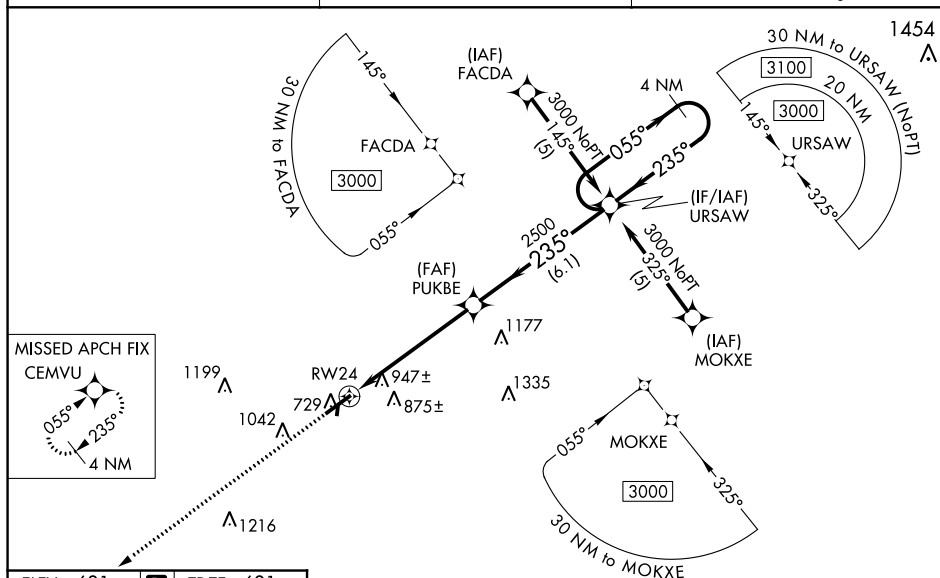

▲ Rwy 24 helicopter visibility reduction below $\frac{3}{4}$ SM NA. When local altimeter setting not received, use Nashville Intl altimeter setting and increase all DA 109 feet and all MDA 120 feet and increase LPV all Cats visibility $\frac{1}{2}$ mile, increase LNAV/VNAV all Cats visibility $\frac{1}{2}$ mile, and LNAV Cats C and D visibility $\frac{1}{4}$ mile, and increase Circling Cats C and D visibility $\frac{1}{2}$ mile. Baro-VNAV and VDP NA when using Nashville Intl altimeter setting.

ODALS

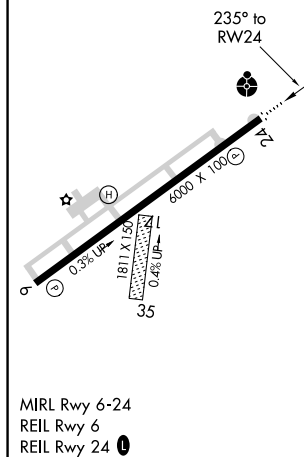
MISSED APPROACH:
Climb to 3000 direct
CEMVU and hold.

AWOS-3
128.625

MEMPHIS CENTER
125.85 379.25

UNICOM
122.8 (CTAF) 

ELEV 681	D	TDZE 681
----------	----------	----------



MIRL Rwy 6-24
REIL Rwy 6
REIL Rwy 24 **L**

235° to

3000	CEMVU
------	-------

VGSI and RNAV glidepath not coincident (VGSI Angle 3.00/TCH 42).

4 NM
Holding Pattern

*LNAV only.

DUKRE

*1.6 NM

055° → 3000

GP 3.00°
TCH 40

CATEGORY	A	B	C	D
LPV DA	981-1 300 (300-1)			
RNAV DA	1329-2¼ 648 (700-2¼)			
RNAV MDA	1220-¾ 539 (600-¾)	1220-1½ 539 (600-1½)	1220-1¾ 539 (600-1¾)	
CIRCLING	1320-1 639 (700-1)	1380-2 699 (700-2)	1420-2¼ 739 (800-2¼)	