



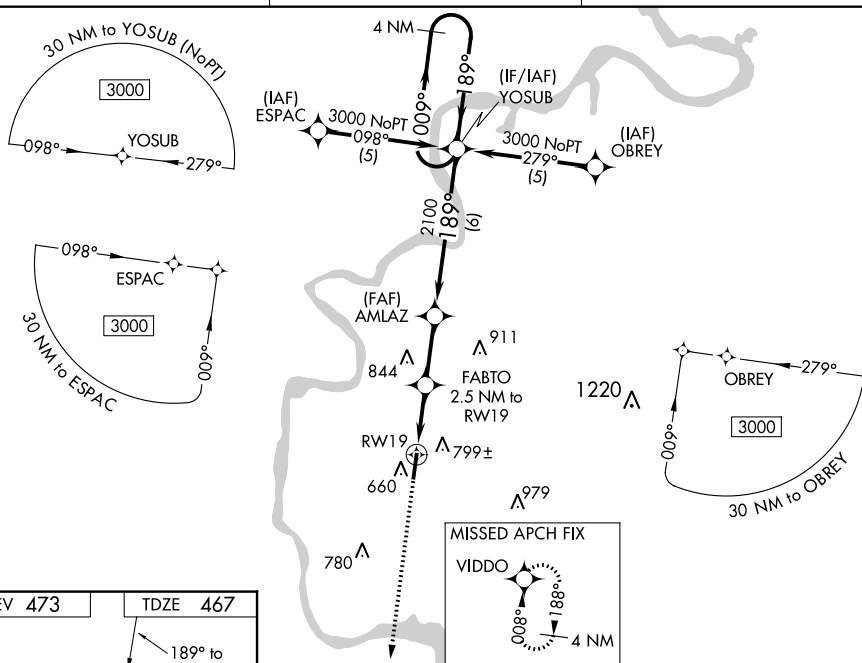
WAAS CH <b>42912</b> <b>W19A</b>	APP CRS <b>189°</b>	Rwy Idg <b>5000</b> TDZE <b>467</b> Apt Elev <b>473</b>
--	------------------------	---

RNAV (GPS) RWY 19  
SAVANNAH-HARDIN COUNTY (SNH)

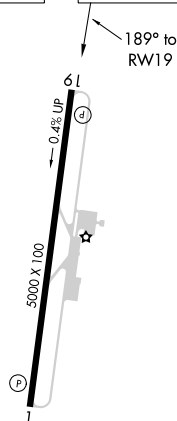
	Baro-VNAV NA when using Muscle Shoals altimeter setting. For uncompensated Baro-VNAV systems, LNAV/VNAV NA below -15° C (5° F) or above 54° C (130° F). DME/DME RNP-0.3 NA.
	Visibility reduction by helicopters NA. When local altimeter setting not received use Muscle Shoals, AL altimeter setting and increase all DA 102 feet and all MDA 120 feet and increase LPV visibility all Cats ½ mile, LNAV/VNAV visibility all Cats ¾ mile, LNAV Cat. C visibility ½ mile, Circling Cat. B visibility ¼ mile and Circling Cat. C visibility ½ mile.

**MISSED APPROACH:**  
Climb to 3000 direct  
VIDDO and hold.

AWOS-3 <b>133.925</b>	MEMPHIS CENTER <b>124.35 239.3</b>	UNICOM <b>122.8 (CTAF)</b>
--------------------------	---------------------------------------	-------------------------------



ELEV 473		TDZE 467
----------	--	----------



MIRL Rwy 1-19  
REIL Rwy 1 and 19

## RNAV (GPS) RWY 19