

APP CRS	Rwy Idg	3498
025°	TDZE	641
	Apt Elev	641

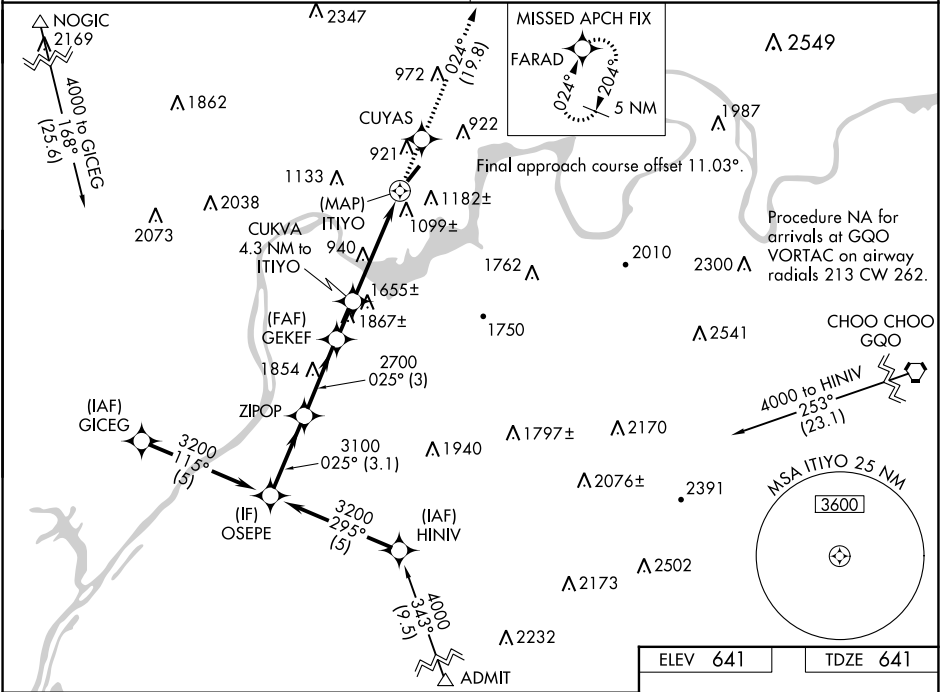
RNAV (GPS) RWY 4
MARION COUNTY-BROWN FIELD (APT)

NA

DME/DME RNP-0.3 NA. Obtain local altimeter setting on CTAF; when not received, use Chattanooga altimeter setting. Rwy 4, 22 helicopter visibility reduction below 1 SM NA. Procedure NA at night.

MISSED APPROACH: Climb to 4000 direct CUYAS and on track 024° to FARAD and hold.

CHATTANOOGA APP CON ★ 119.2 323.075	UNICOM 122.8 (CTAF)
--	------------------------



Visual Segment - Obstacles.				
<div><div>OSEPE</div><div>ZIPOP</div><div>GEKEF</div><div>CUKVA 4.3 NM to ITIYO</div><div>ITIYO</div><div>ADMIT</div></div>				
<div><div>3200</div><div>3100</div><div>2700</div><div>2240</div></div>				
<div><div>3.1 NM</div><div>3 NM</div><div>1.5 NM</div><div>4.3 NM</div><div>0.5</div></div>				
CATEGORY	A	B	C	D
LNAV MDA	1500-1 859 (900-1)	1500-1¼ 859 (900-1¼)	1500-2½ 859 (900-2½)	NA
CIRCLING	1560-1¼ 919 (1000-1¼)	1840-1½ 1199 (1200-1½)	1860-3 1219 (1300-3)	NA
CHATTANOOGA ALTIMETER SETTING MINIMUMS				
LNAV MDA	1540-1¼ 899 (900-1¼)	1540-2¾ 899 (900-2¾)	NA	NA
CIRCLING	1620-1¼ 979 (1000-1¼)	1900-1½ 1259 (1300-1½)	1920-3 1279 (1300-3)	NA

ELEV 641

TDZE 641

MIRL Rwy 4-22
REIL Rws 4 and 22

SE-1, 31 DEC 2020 to 28 JAN 2021

SE-1, 31 DEC 2020 to 28 JAN 2021