

APP CRS	Rwy Idg	5501
022°	TDZE	846
	Apt Elev	874

RNAV (GPS) RWY 2

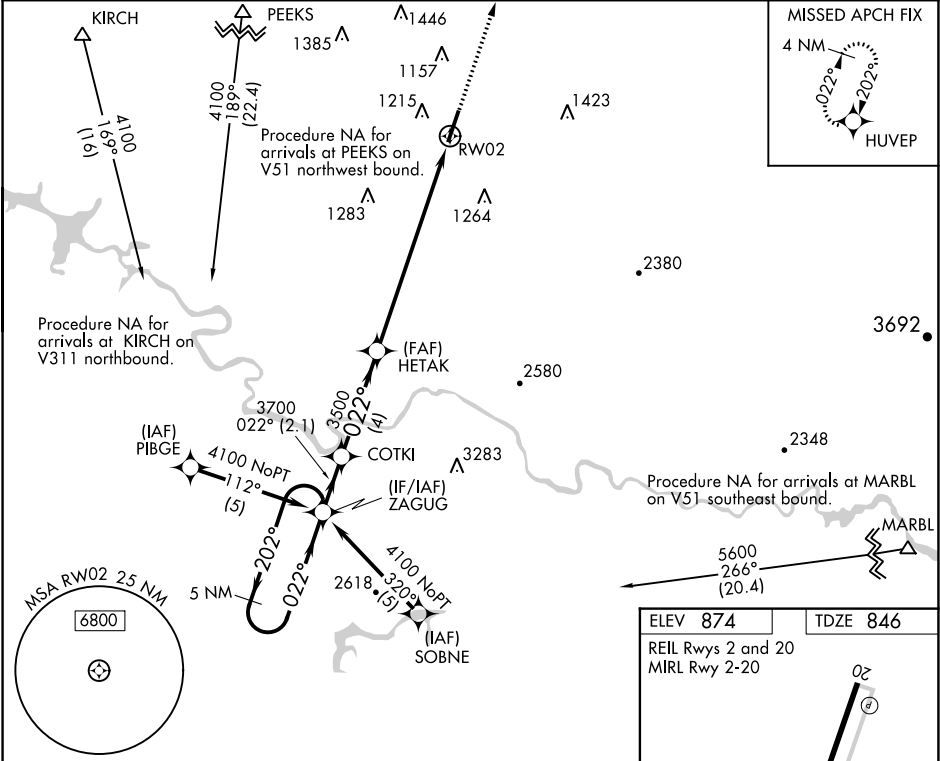
MCMINN COUNTY (MMI)

NA

DME/DME RNP-0.3 NA. Night Landing: Rwy 2 NA. Helicopter visibility reduction below 1 SM NA. When local altimeter setting not received, use Mc Ghee Tyson altimeter setting and increase all MDA 120 feet, and increase LNAV and Circling Cats C and D visibility ¼ mile.

MISSED APPROACH:  
Climb to 3100 direct HUVEP and hold.

AWOS-3 125.425	KNOXVILLE APP CON 123.9 353.6	UNICOM 122.8 (CTAF)
-------------------	----------------------------------	------------------------



5 NM Holding Pattern

VGSI and descent angles not coincident (VGSI Angle 3.00/TCH 50).

3100 HUVEP

This diagram provides a detailed view of the approach. It shows the 5 NM holding pattern around ZAGUG, the descent paths from 4100 and 3700, and the final approach to RWY 2. Key altitudes and distances are marked: 4100, 3700, 3500, 3100, 2.1 NM, 4 NM, 8.1 NM, and 100 feet. The diagram also shows the VGSI and TCH 40.

CATEGORY	A	B	C	D
LNAV MDA	1600-1 754 (800-1)	1600-1¼ 754 (800-1¼)	1600-2¼ 754 (800-2¼)	1600-2½ 754 (800-2½)
CIRCLING	1600-1 726 (800-1)	1600-1¼ 726 (800-1¼)	1600-2¼ 726 (800-2¼)	1600-2½ 726 (800-2½)

