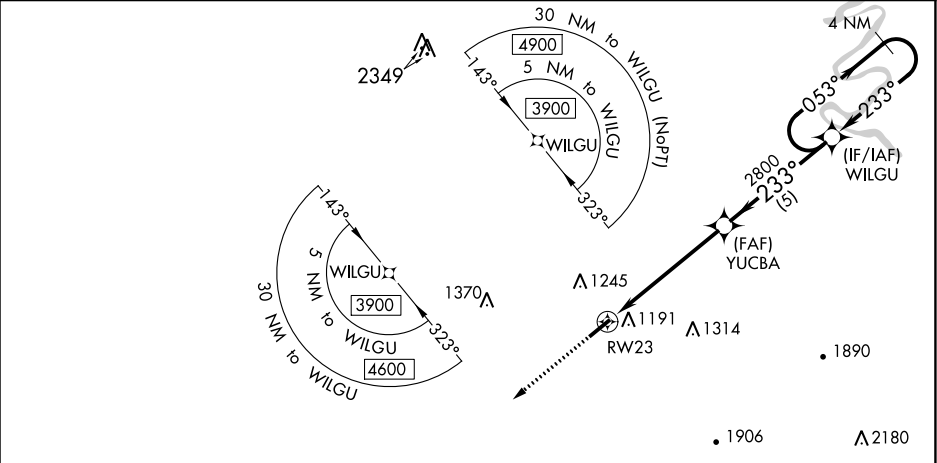


Baro-VNAV and VDP NA when using Upper Cumberland Rgnl altimeter setting. For uncompensated Baro-VNAV systems, LNAV/VNAV NA below -17°C (2°F) or above 54°C (130°F). DME/DME RNP -0.3 NA. Night Landing: Rwy 5 NA. Helicopter visibility reduction below ¾ SM NA. When local altimeter setting not received, use Cumberland Rgnl altimeter setting and increase all DA 62 feet, and all MDA 80 feet; increase LNAV/VNAV all Cats, LNAV Cats C and D, and Circling Cat C visibility ½ mile, and increase Circling Cat D visibility ½ mile.

MISSED APPROACH:
Climb to 3900 direct ZOVRI and hold.

AWOS-3 135.525	MEMPHIS CENTER 128.15 323.125	UNICOM 122.8 (CTAF) 0
-------------------	----------------------------------	--------------------------



ELEV 1032	TDZE 1026	233° to RW23	5000 X 100	5
3900	ZOVRI	VGSI and RNAV glidepath not coincident (VGSI Angle 3.00/TCH 18)	WILGU	053°
1.6 NM to RW23	YUCBA 2800	233°	2800	3900
1.6 NM	3.8 NM	5 NM	GP 3.00°	TCH 50
CATEGORY	A	B	C	D
LPV DA	1276-1	250 (300-1)		
LNAV/VNAV DA	1423-1½	397 (400-1½)		
LNAV MDA	1580-1	554 (600-1)	1580-1½	554 (600-1½)
CIRCLING	1580-1 548 (600-1)	1600-1 568 (600-1)	1600-1½ 568 (600-1½)	1700-2 668 (700-2)