

WAAS CH 93934 W02A	APP CRS 021°	Rwy Idg TDZE 717 Apt Elev 717	5001
--	------------------------	---	-------------

RNAV (GPS) RWY 2

ELLINGTON (LUG)

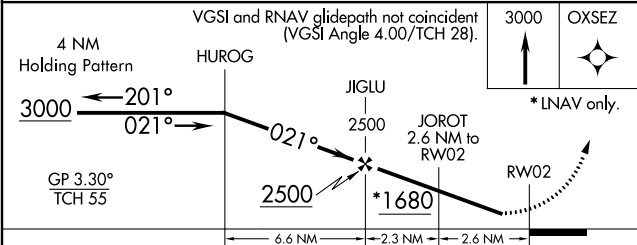
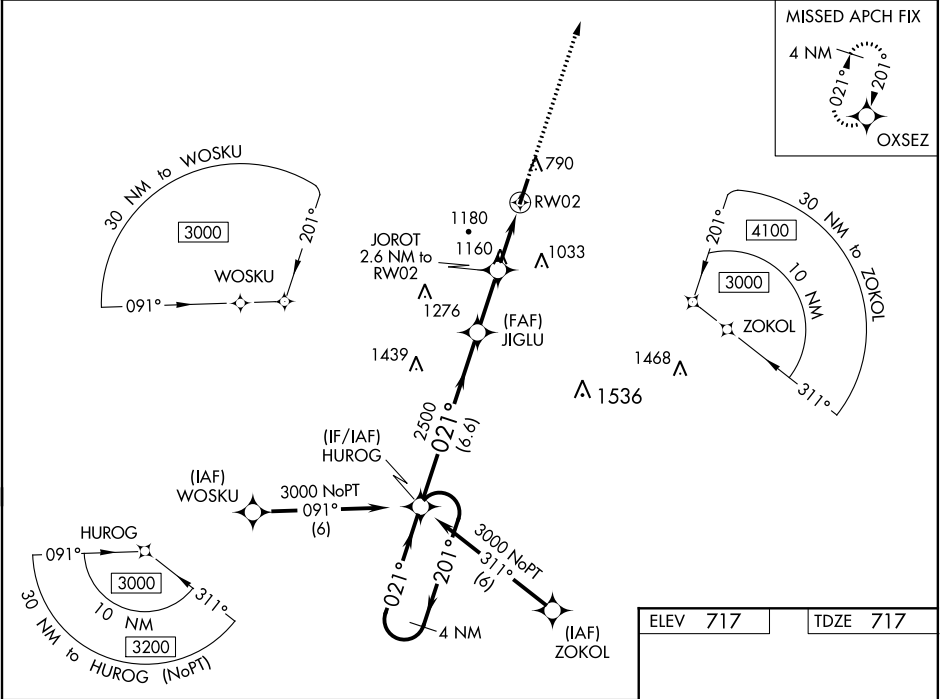
⚠

NA

DME/DME RNP-0.3 NA. When local altimeter setting not received; use Nashville Intl altimeter setting and increase all DA 103 feet and all MDA 120 feet; increase LPV all Cats visibility 1/8 mile and LNAV/VNAV all Cats and LNAV Cat B and Circling Cats A/B 1/4 mile and LNAV Cat C/D and Circling Cat C 1/2 mile. Baro-VNAV NA when using Nashville Intl altimeter setting. For uncompensated Baro-VNAV systems, LNAV/VNAV NA below -16°C (4°F) or above 54°C (130°F). Rwy 2 helicopter visibility reduction below 1 SM NA. Straight-in Rwy 2 NA at night, Circling Rwy 2 NA at night.

MISSED APPROACH:
Climb to 3000 direct
OXSEZ and hold.

AWOS-3 135.775	MEMPHIS CENTER 128.15 323.125	UNICOM 122.8 (CTAF)
--------------------------	---	-------------------------------



CATEGORY	A	B	C	D
LPV DA	992-1	275 (300-1)		NA
LNAV/VNAV DA	1427-2 1/4	710 (800-2 1/4)		NA
LNAV MDA	1420-1	703 (800-1)	1420-2	703 (800-2)
CIRCLING	1420-1 703 (800-1)	1480-1 763 (800-1)	1520-2 1/4 803 (900-2 1/4)	1640-3 923 (1000-3)

