

WAAS CH <b>56619</b> <b>W20A</b>	APP CRS <b>201°</b>	Rwy Idg TDZE Apt Elev	<b>5001</b> <b>709</b> <b>717</b>
--	------------------------	-----------------------------	---

RNAV (GPS) RWY 20

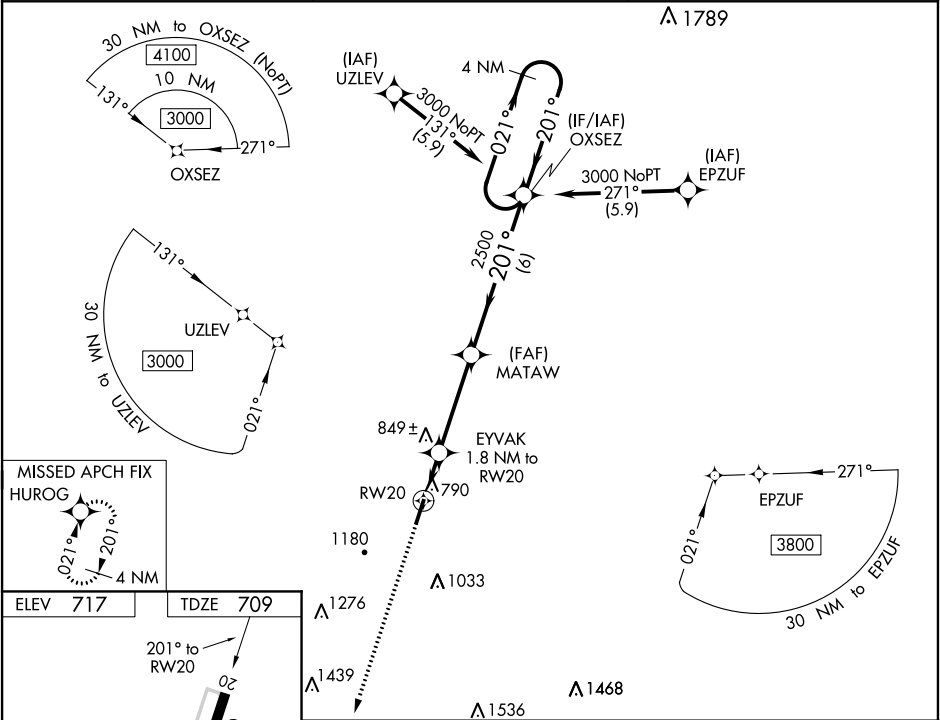
ELLINGTON (LUG)

NA

For uncompensated Baro-VNAV systems, LNAV/VNAV NA below -16°C (4°F) or above 54°C (130°F). DME/DME RNP-0.3 NA. When local altimeter setting not received; use Nashville Intl altimeter setting and increase all DA 103 feet and all MDA 120 feet; increase LPV all Cats and LNAV/VNAV all Cats visibility ¾ mile and increase LNAV Cat C/D and Circling Cat B ½ mile and Circling Cat C ½ mile. Baro-VNAV and VDP NA when using Nashville Intl altimeter setting. Circling to Rwy 2 NA at night. Rwy 2 helicopter visibility reduction below ¾ SM NA. Rwy 20 helicopter visibility reduction below ¾ SM NA.

MISSED APPROACH:  
Climb to 3000 direct HUROG and hold.

AWOS-3 <b>135.775</b>	MEMPHIS CENTER <b>128.15 323.125</b>	UNICOM <b>122.8</b> (CTAF)
--------------------------	---	-------------------------------



ELEV 717	TDZE 709				
REIL Rwy 2 and 20 MIRL Rwy 2-20					
		3000 HUROG VGSi and RNAV glidepath not coincident (VGSi Angle 3.50/TCH 21).			
		*LNAV only. EYVAK 1.8 NM to RW20			
		*1 NM to RW20			
		*1320			
		1 NM 0.8 3.7 NM 6 NM			
		CATEGORY A B C D			
		LPV DA 1002-1 293 (300-1)			
		LNAV/VNAV DA 976-78 267 (300-78)			
		LNAV MDA 1100-1 391 (400-1) 1100-1½ 391 (400-1½)			
		CIRCLING 1280-1 563 (600-1) 1480-1 763 (800-1) 1520-2¼ 803 (900-2¼) 1640-3 923 (1000-3)			