

WAAS CH 48812 W18A	APP CRS 184°	Rwy Idg TDZE Apt Elev	4753 609 614
----------------------------------------	------------------------	-----------------------------	-----------------------------------------

RNAV (GPS) RWY 18

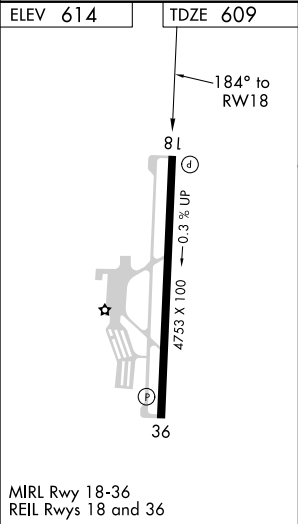
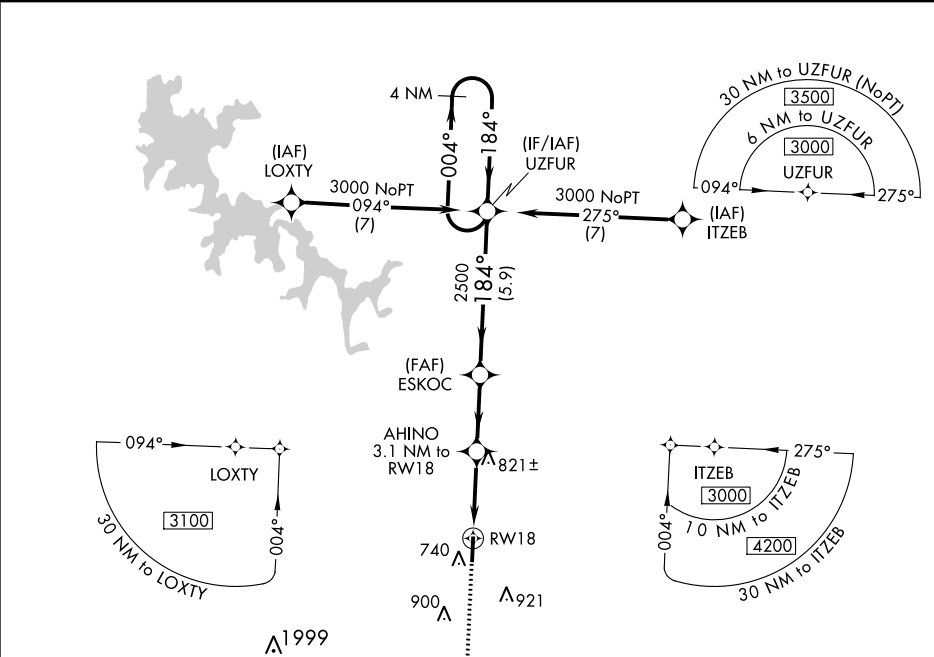
MURFREESBORO MUNI (MBT)

▼

For uncompensated Baro-VNAV systems, LNAV/VNAV NA below -16°C (4°F) or above 54°C (130°F). DME/DME RNP-0.3 NA.

MISSED APPROACH:
Climb to 3000 direct
URACE and hold.

AWOS-3 133.975	NASHVILLE APP CON 118.4 360.7	GCO 135.075	UNICOM 123.075 (CTAF)
--------------------------	-----------------------------------------	-----------------------	---------------------------------



MISSED APCH FIX URACE 004° 184° 4 NM			
3000 URACE	VGSI and descent angles not coincident (VGSI Angle 3.00/TCH 18).		4 NM Holding Pattern
AHINO 3.1 NM to RW18		ESKOC 2500	UZFUR 3000
*1.4 NM to RW18		*1620	*LNAV only. 2500
1.4 1.7 NM		2.7 NM	5.9 NM
CATEGORY	A	B	C
LPV DA	859- ³ / ₄ 250 (300- ³ / ₄)		NA
LNAV/VNAV DA	898- ⁷ / ₈ 289 (300- ⁷ / ₈)		NA
LNAV MDA	1080-1	471 (500-1)	1080-1 ³ / ₈ 471 (500-1 ³ / ₈)
CIRCLING	1080-1	466 (500-1)	1280-1 ³ / ₄ 666 (700-1 ³ / ₄)