

WAAS CH 69212 W25A	APP CRS 252°	Rwy Idg 4703 TDZE 913 Apt Elev 913
--	------------------------	---

RNAV (GPS) RWY 25
FLEMING-MASON (FGX)

FILMING-MASON (FGX)

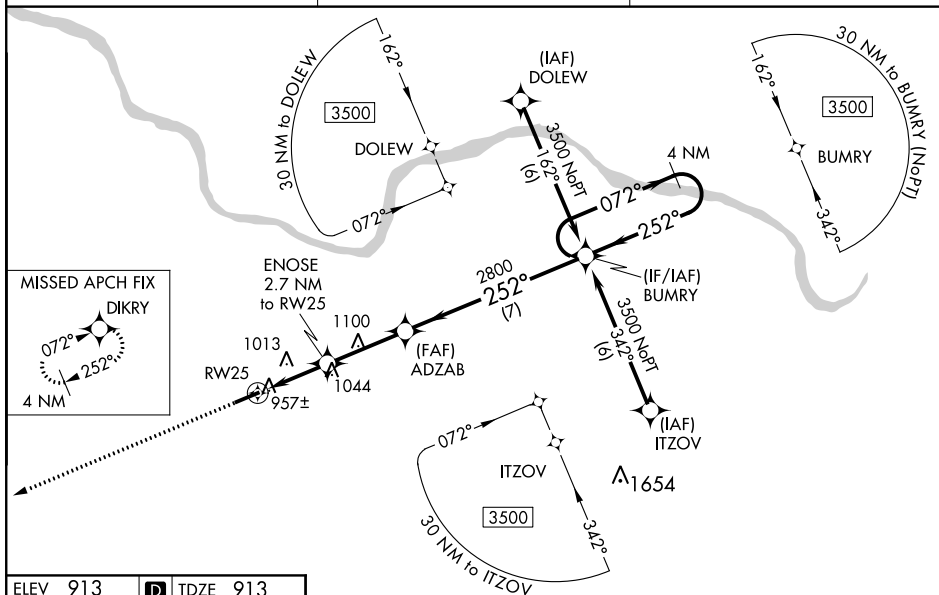
V **A** Baro-VNAV NA when using Lexington altimeter setting. For uncompensated Baro-VNAV systems, LNAV/VNAV NA below -16°C (4°F) or above 47°C (116°F). DME/DME RNP-0.3 NA. When local altimeter setting not received, use Lexington altimeter setting and increase LPV DA to 1290, LNAV/VNAV DA to 1344 feet. Increase LPV visibility ¼ mile, LNAV/VNAV visibility ½ mile. Increase all MDA 140 feet. Increase LNAV Cat C visibility ½ mile, Cat D ¼ mile. Increase Circling Cats C/D visibility ¼ mile.

MISSED APPROACH:
Climb to 3000 direct
DIKRY and hold.

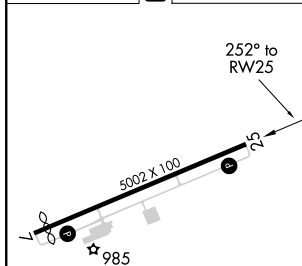
AWOS-3
118.125

INDIANAPOLIS CENTER
124.225 360.725

UNICOM
123.0 (CTAF) **L**



ELEV 913	D	TDZE 913
----------	----------	----------



3000	DIKRY	VGS1 and RNAV glidepath not coincident (VGS1 Angle 3.65/TCH 40).	4 NM Holding Pattern
------	-------	---	-------------------------

CATEGORY		A		B		C		D	
LPV	DA	1163-1		250 (300-1)					
LNAV/ VNAV	DA	1217-1		304 (400-1)					
LNAV	MDA	1280-1 367 (400-1)							1280-1¼ 367 (400-1¼)
CIRCLING		1360-1 447 (500-1)		1380-1 467 (500-1)		1380-1½ 467 (500-1½)		1480-2 567 (600-2)	

MIRL Rwy 7-25 **L**

REIL Rwy 7 and 25 L

FLEMINGSBURG, KENTUCKY

Orig-A 22AUG13

38°33'N-83°45'W

FLEMING-MASON (FGX)

RNAV (GPS) RWY 25