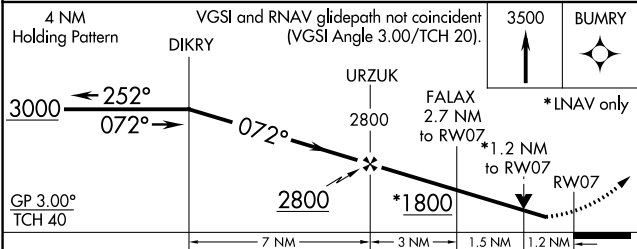
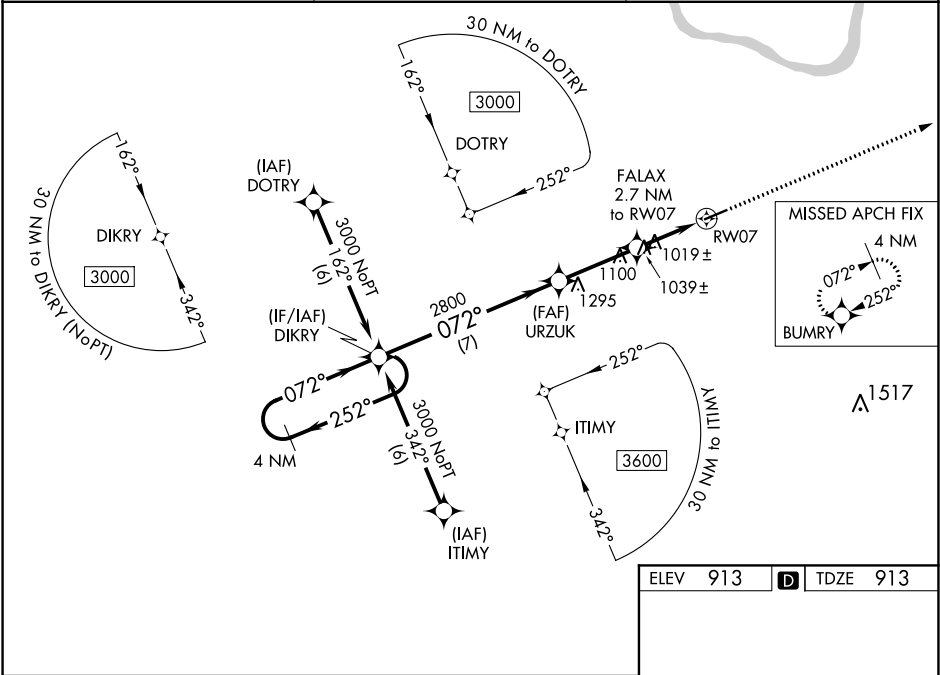


WAAS CH <b>56312</b> <b>W07A</b>	APP CRS <b>072°</b>	Rwy Idg TDZE Apt Elev	<b>4703</b> <b>913</b> <b>913</b>
--	------------------------	-----------------------------	---

RNAV (GPS) RWY 7  
FLEMING-MASON (F'GX)

RNP APCH. Baro-VNAV NA when using Lexington altimeter setting. For uncompensated Baro-VNAV systems, LNAV/VNAV NA below -16°C or above 47°C. Rwy 7 helicopter visibility reduction below ¾ SM NA. When local altimeter setting not received, use Lexington altimeter setting: increase LPV DA to 1290 and all visibilities ¼ SM; increase LNAV/VNAV DA to 1383 feet and all visibilities ½ SM; increase all MDA 140 feet and LNAV Cat C visibility ¼ SM and Cat D ½ SM.	MISSED APPROACH: Climb to 3500 direct BUMRY and hold.
--	---

AWOS-3 <b>118.125</b>	INDIANAPOLIS CENTER <b>124.225 360.725</b>	UNICOM <b>123.0(CTAF)</b>
--------------------------	---	------------------------------



CATEGORY	A	B	C	D
LPV DA	1163-1	250 (300-1)		
LNAV/VNAV DA	1256-1¼	343 (400-1¼)		
LNAV MDA	1320-1	407 (500-1)	1320-1¼	407 (500-1¼)

