

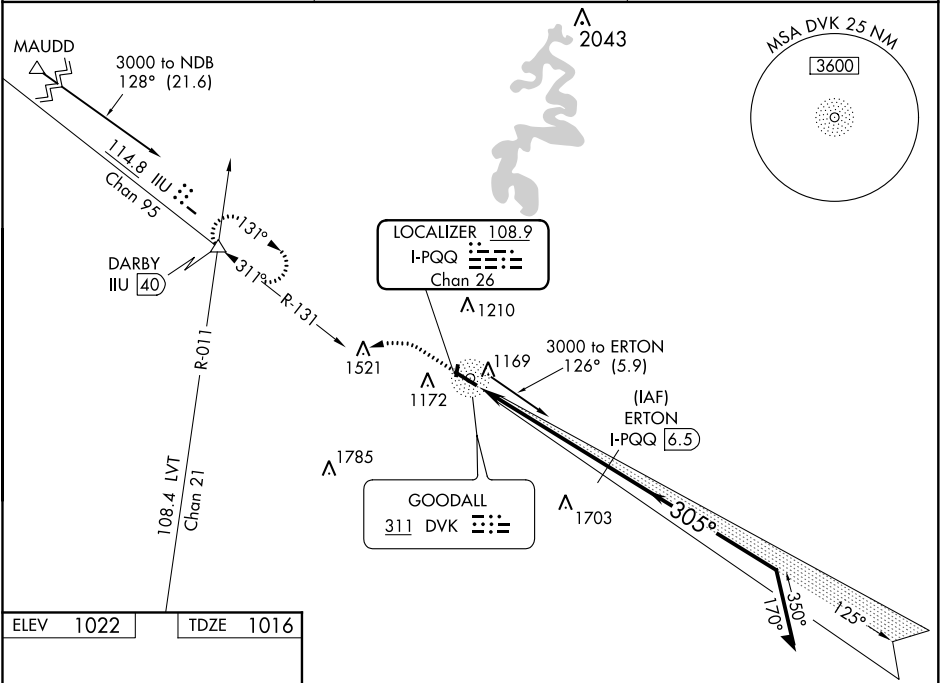
LOC/DME I-PQQ 108.9 Chan 26	APP CRS 305°	Rwy Idg TDZE Apt Elev 5000 1016 1022
---	------------------------	--

LOC RWY 30
STUART POWELL FIELD (DVK)

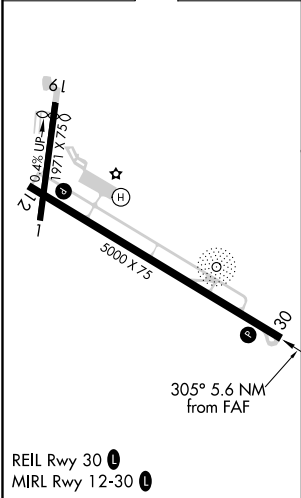
When local altimeter setting not received, use Lexington altimeter setting and increase all MDA 80 feet; increase S-30 Cat C-D visibility and Circling Cat C-D visibility ¼ mile. Rwy 30 helicopter visibility reduction below ¾ SM NA. Rwy 1, 19 helicopter visibility reduction below 1 SM NA. DME required. Circling Rwy 1, 19 NA at night.

MISSED APPROACH: Climb to 2000 then climbing left turn to 3000 on heading 260° and IIU R-131 to DARBY INT and hold.

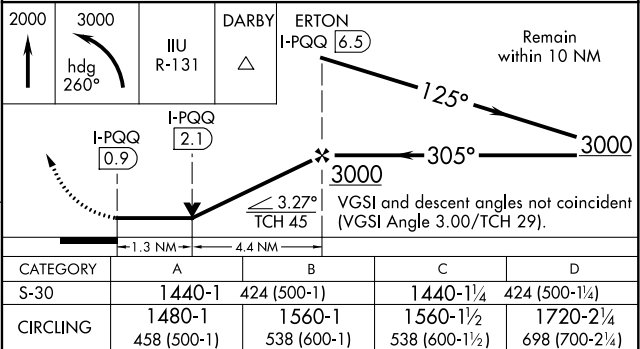
AWOS-3 128.325	LEXINGTON APP CON 120.15 259.3	UNICOM 122.8 (CTAF)
--------------------------	--	-------------------------------



ELEV 1022	TDZE 1016
-----------	-----------



DME REQUIRED



SE-1, 31 DEC 2020 to 28 JAN 2021

SE-1, 31 DEC 2020 to 28 JAN 2021