

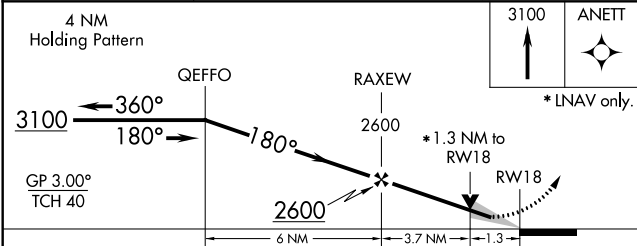
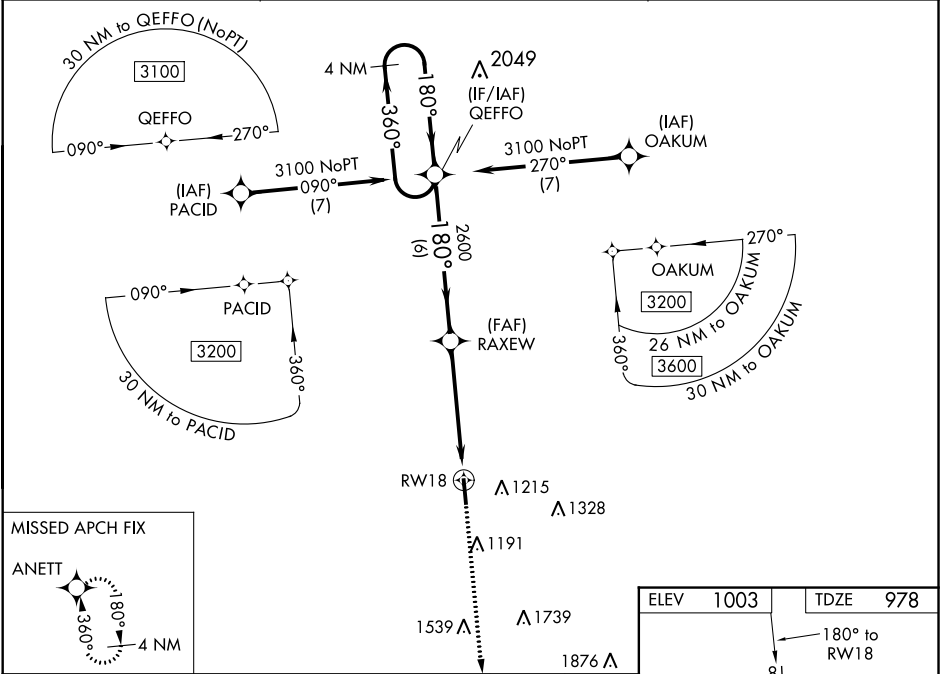
WAAS CH <b>63114</b> <b>W18A</b>	APP CRS <b>180°</b>	Rwy Idg TDZE Apt Elev	<b>5001</b> <b>978</b> <b>1003</b>
--	------------------------	-----------------------------	--

**RNAV (GPS) RWY 18**  
CENTRAL KENTUCKY RGNL (RGA)

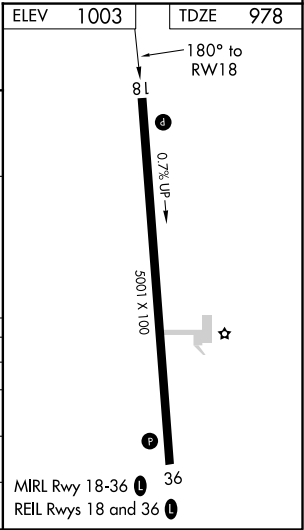
**⚠** For uncompensated Baro-VNAV systems, LNAV/VNAV NA below -16°C (4°F) or above 54°C (130°F). DME/DME RNP-0.3 NA. When local altimeter setting not received, use Lexington altimeter setting and increase LPV DA to 1295 feet, LNAV/VNAV DA to 1341 feet and all MDA 80 feet; increase LPV all Cats visibility ¼ mile; LNAV/VNAV all Cats and LNAV Cats C and D ¼ mile and Circling visibility Cat C ½ mile, Cat D ¼ mile. VDP and Baro-VNAV NA when using Lexington altimeter setting.

**MISSED APPROACH:**  
Climb to 3100 direct ANETT and hold.

AWOS-3 <b>119.625</b>	LEXINGTON APP CON <b>120.15 259.3</b>	UNICOM <b>122.725 (CTAF) ①</b>
--------------------------	--	-----------------------------------



CATEGORY	A	B	C	D
LPV DA		1228-7/8	250 (300-7/8)	
LNAV/VNAV DA		1274-1	296 (300-1)	
LNAV MDA	1440-1	462 (500-1)	1440-13/8	462 (500-13/8)
CIRCLING	1440-1 437 (500-1)	1520-1 517 (600-1)	1520-1½ 517 (600-1½)	1780-2½ 777 (800-2½)



SE-1, 31 DEC 2020 to 28 JAN 2021

SE-1, 31 DEC 2020 to 28 JAN 2021