

WAAS CH 82533 W21A	APP CRS 219°	Rwy Idg TDZE 963 Apt Elev 963	4000
----------------------------------------	------------------------	---------------------------------------------------	-------------

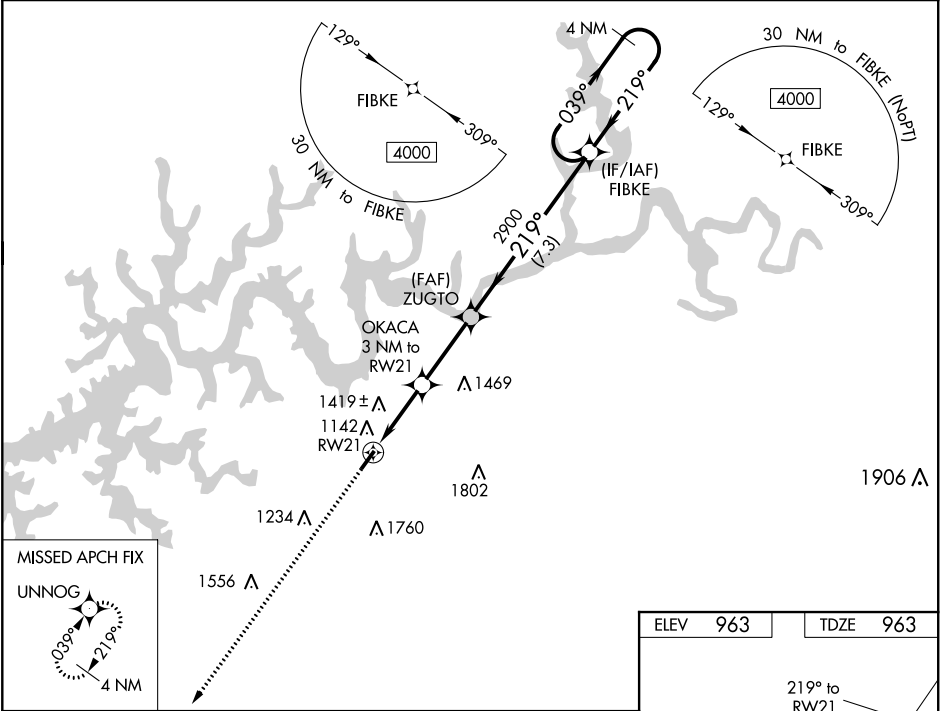
RNAV (GPS) RWY 21

WAYNE COUNTY (EKQ)

⚠ Baro-VNAV NA when using Somerset altimeter setting. For uncompensated Baro-VNAV systems, LNAV/VNAV NA below -16°C (4°F) or above 54°C (130°F). DME/DME RNP-0.3 NA. VDP NA with Somerset altimeter setting. Helicopter visibility reduction below ¾ SM NA. When local altimeter setting not received, use Somerset altimeter setting and increase all DA 44 feet, and all MDA 60 feet; increase LPV all Cats visibility ½ mile and LNAV/VNAV all Cats visibility ½ mile. Night landing: Rwy 3 NA.

MISSED APPROACH:
Climb to 4000 direct UNNOG and hold.

AWOS-3PT 118.825	INDIANAPOLIS CENTER 124.625 371.925	UNICOM 122.8 (CTAF) 0
----------------------------	-----------------------------------------------	---------------------------------



4000

UNNOG

*LNAV only.

↑

✱

OKACA

3 NM to RW21

ZUGTO

2900

FIBKE

4 NM Holding Pattern

*1.8 NM to RW21

↙

↘

↗

↖

039° →

← 219°

4000

GP 3.00° TCH 40

↙

↘

1.8 NM

1.2 NM

3 NM

7.3 NM

1940*

2900

CATEGORY	A	B	C	D
LPV DA	1257-1	294 (300-1)	NA	
LNAV/VNAV DA	1666-2 ½	703 (800-2½)	NA	
LNAV MDA	1580-1	617 (700-1)	NA	
CIRCLING	1780-1¼ 817 (900-1¼)	1840-1¼ 877 (900-1¼)	NA	

