

WAAS CH 99419 W01A	APP CRS 014°	Rwy Idg 5507 TDZE 495 Apt Elev 497
--	------------------------	---

RNAV (GPS) RWY 1

CARROLL COUNTY (HZD)

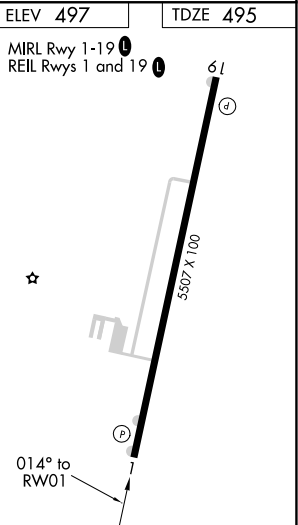
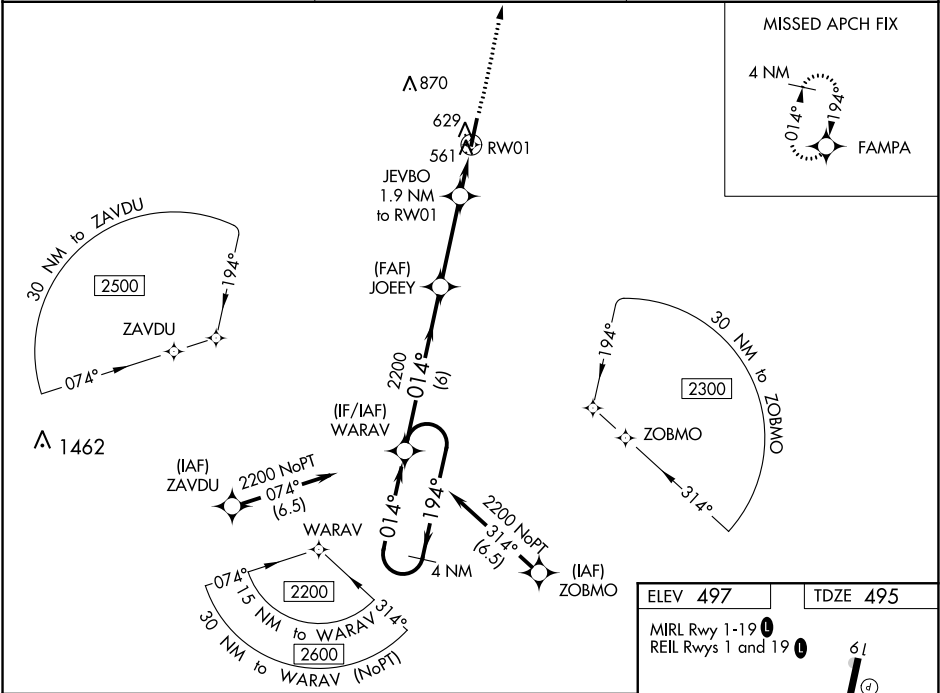
▼

▲ NA

For uncompensated Baro-VNAV systems, LNAV/VNAV NA below -15°C (5°F) or above 54°C (130°F). DME/DME RNP-0.3 NA. When local altimeter setting not received, use Mc Kellar-Sipes Rgnl altimeter setting and increase all DA 94 feet and all MDA 100 feet; increase LPV all Cats visibility ¼ mile, LNAV/VNAV all Cats visibility ⅓ mile, LNAV Cats C and D visibility ¼ mile, and Circling Cats C and D visibility ½ mile. VDP and Baro-VNAV NA with Mc Kellar-Sipes Rgnl altimeter setting. Helicopter visibility reduction below ¾ SM NA.

MISSED APPROACH: Climb to 2200 direct FAMPA and hold.

AWOS-3 133.275	MEMPHIS CENTER 134.65 316.15	UNICOM 122.8 (CTAF) 0
--------------------------	--	---------------------------------



4 NM Holding Pattern				VGSI and RNAV glidepath not coincident (VGSI Angle 3.00/TCH 26).		2200	FAMPA
2200 ← 194°				014° →		2200	
GP 3.00°				TCH 40		*1140	*1.1 NM to RW01
6 NM				3.3 NM		0.8 NM	1.1 NM
CATEGORY	A	B	C	D			
LPV DA	745-7/8			250 (300-7/8)			
LNAV/VNAV DA	810-1			315 (400-1)			
LNAV MDA	880-1	385 (400-1)	880-1 1/8	385 (400-1 1/8)			
CIRCLING	980-1	483 (500-1)	1220-2	723 (800-2)	1220-2 1/4	723 (800-2 1/4)	