

WAAS CH 77801 W21A	APP CRS 216°	Rwy Idg TDZE 1221 Apt Elev 1221
--	------------------------	---

RNAV (GPS) RWY 21

BIG SANDY RGNL (SJS)

⚠ For uncompensated Baro-VNAV systems, LNAV/VNAV NA below -17°C (2°F) or above 54°C (130°F). DME/DME RNP-0.3 NA. Circling to Rwy 3 NA at night. When local altimeter setting not received, use Jackson altimeter setting and increase all DA 101 feet and all MDA 120 feet; increase LPV all Cats visibility ¼ mile, increase LNAV/VNAV all Cats and LNAV Cats C/D visibilities ⅜ mile, and increase Circling Cat C visibility ½ mile, Cat D visibility ¼ mile. Baro-VNAV and VDP NA when using Jackson altimeter setting.

MISSED APPROACH:
Climb to 4300 direct KAPLE and hold.

AWOS-3 120.175	HUNTINGTON APP CON 119.75 270.1	UNICOM 123.05 (CTAF) 0
--------------------------	---	----------------------------------

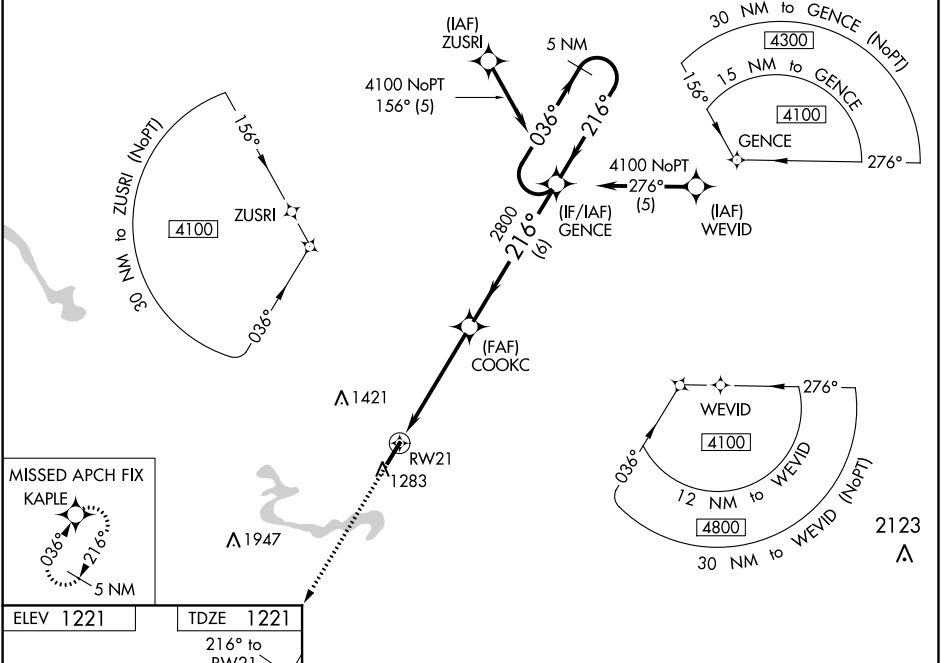


Diagram of Runway 21 (RW21) showing its length of 5000 x 100 feet, elevation of 1234 feet, and a 1.0% up-slope. It also shows the intersection with Runway 3 and the location of the REIL and MIRL lights.

4300

↑

KAPLE

✧

VGSI and RNAV glidepath not coincident

(VGSI Angle 3.00/TCH 27).

5 NM

Holding Pattern

*LNAV only.

1.4 NM

to

RW21

1.4 NM

to

RW21

3.4 NM

to

COOKC

6 NM

to

GENCE

COOKC

2800

216°

2800

GENCE

036° →

4100

← 216°

GP 3.00°

TCH 40

CATEGORY	A	B	C	D
LPV DA	1471-¾		250 (300-¾)	
LNAV/VNAV DA	1739-1⅓		518 (600-1⅓)	
LNAV MDA	1700-1	479 (500-1)	1700-1⅓	479 (500-1⅓)
CIRCLING	1760-1	539 (600-1)	1920-2 699 (700-2)	2060-2¾ 839 (900-2¾)

REIL Rws 3 and 21

MIRL Rwy 3-21

CIRCLING