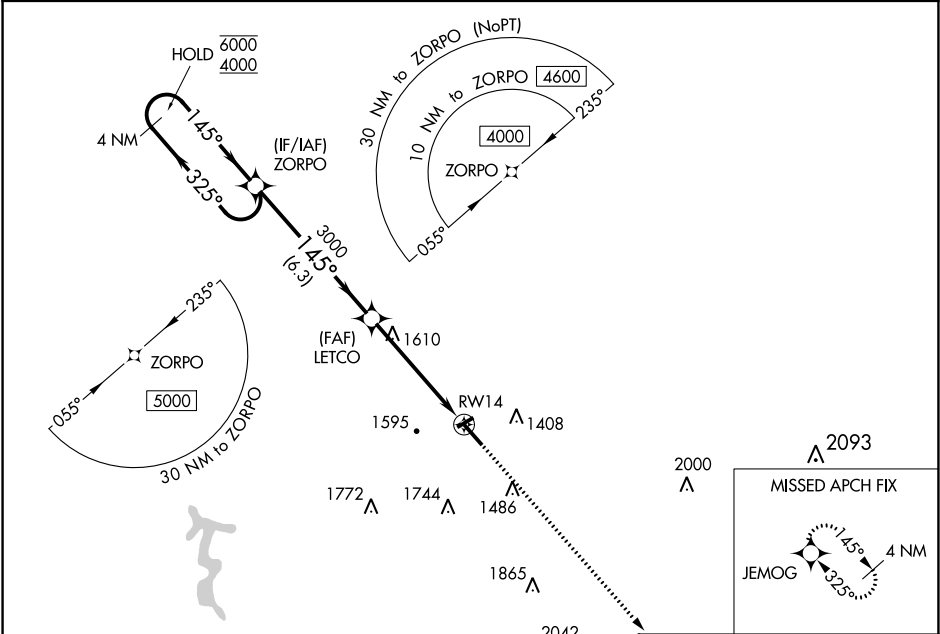


WAAS CH 69323 W14A	APP CRS 145°	Rwy Idg TDZE 1243 Apt Elev 1256
----------------------------------------	------------------------	-----------------------------------------------------

RNAV (GPS) RWY 14
WENDELL H FORD (CPF)

RNP APCH.	MISSED APPROACH: Climb to 4000 direct JEMOG and hold.
Circling Rwy 24, 32 NA at night. For uncompensated Baro-VNAV systems, LNAV/VNAV NA below -17°C or above 54°C. Rwy 14 helicopter visibility reduction below 3/4 SM NA.	

AWOS-3 119.025	INDIANAPOLIS CENTER 126.575 257.85	UNICOM 122.7 (CTAF) 0
--------------------------	----------------------------------------------	---------------------------------



4 NM Holding Pattern		ZORPO		VGSI and RNAV glidepath not coincident (VGSI Angle 3.00/TCH 31).		4000		JEMOG	
6000		4000		3000		*1.9 NM to RWY 14		*INAV only	
GP 3.20° TCH 51		3000		RWY 14					
6.3 NM		3.1 NM		1.9 NM					
CATEGORY	A	B	C	D					
LPV DA	1443-3/4	200 (200-3/4)	1493-3/4 250 (300-3/4)	NA					
LNAV/VNAV DA	1858-2 615 (700-2)				NA				
LNAV MDA	1880-1	637 (700-1)	1880-13/4	637 (700-13/4)					
CIRCLING	2000-1 744 (800-1)	2040-1 784 (800-1)	2060-21/4 804 (900-21/4)	2140-3 884 (900-3)					

MIRL Rwy 14-32 0
REIL Rws 14 and 32 0

SE-1, 31 DEC 2020 to 28 JAN 2021

SE-1, 31 DEC 2020 to 28 JAN 2021