

WAAS CH 90526 W21A	APP CRS 207°	Rwy Idg TDZE 537 Apt Elev 537	5003
--	------------------------	---	-------------

RNAV (GPS) RWY 21

OHIO COUNTY (JQD)

RNP APCH.

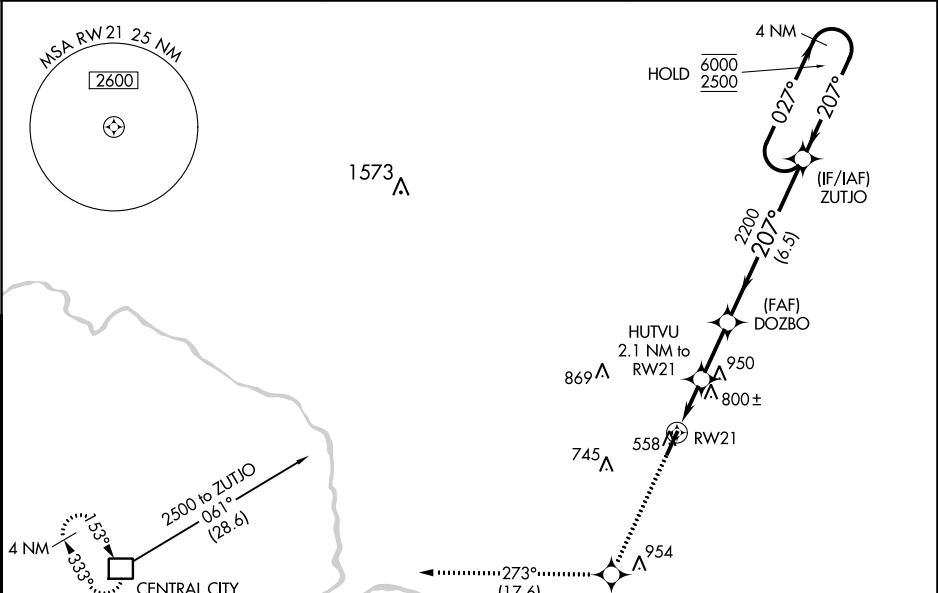
▼

▲

Baro-VNAV and VDP NA when using Owensboro altimeter setting. For uncompensated Baro-VNAV systems, LNAV/VNAV NA below -16°C or above 54°C. When local altimeter setting not received, use Owensboro altimeter setting and increase LPV DA to 858 feet, increase LNAV/VNAV DA to 1082 feet. Increase all MDA 80 feet, increase LNAV/VNAV visibilities all Cats ¼ SM, increase ENAV and Circling Cat C visibility ¼ SM.

MISSED APPROACH:
Climb to 3000 direct
VUSWO and on track
273° to CCT DME
and hold.

AWOS-3PT 132.1	EVANSVILLE APP CON ★ 124.025 290.9	UNICOM 122.8 (CTAF) 0
--------------------------	--	---------------------------------



3000 VUSWO		CCT		DOZBO		ZUTJO		4 NM Holding Pattern	
↑	✳	tr 273°	□	2200		2200		6000 2500	
*LNAV only.		HUTVU 2.1 NM to RW21		*1360		2200		GP 3.50° TCH 47	
RW21		1.3 NM		0.8 NM		2.3 NM		6.5 NM	
CATEGORY		A		B		C		D	
LPV DA		787-1 250 (300-1)				807-1 270 (300-1)		NA	
LNAV/ VNAV DA		1011-1 ³ / ₈		474 (500-1 ³ / ₈)				NA	
LNAV MDA		1060-1 523 (600-1)				1060-1 ¹ / ₂ 523 (600-1 ¹ / ₂)		NA	
CIRCLING		1060-1 523 (600-1)		1100-1 563 (600-1)		1300-2 ¹ / ₄ 763 (800-2 ¹ / ₄)		NA	

ELEV 537

TDZE 537

207° to RWY 21

3003 X 75

MIRL Rwy 3-21

REIL Rwy 3 and 21