

WAAS CH 86540 W27A	APP CRS 274°	Rwy Ldg TDZE 1463 Apt Elev 1470
--	------------------------	---

RNAV (GPS) RWY 27

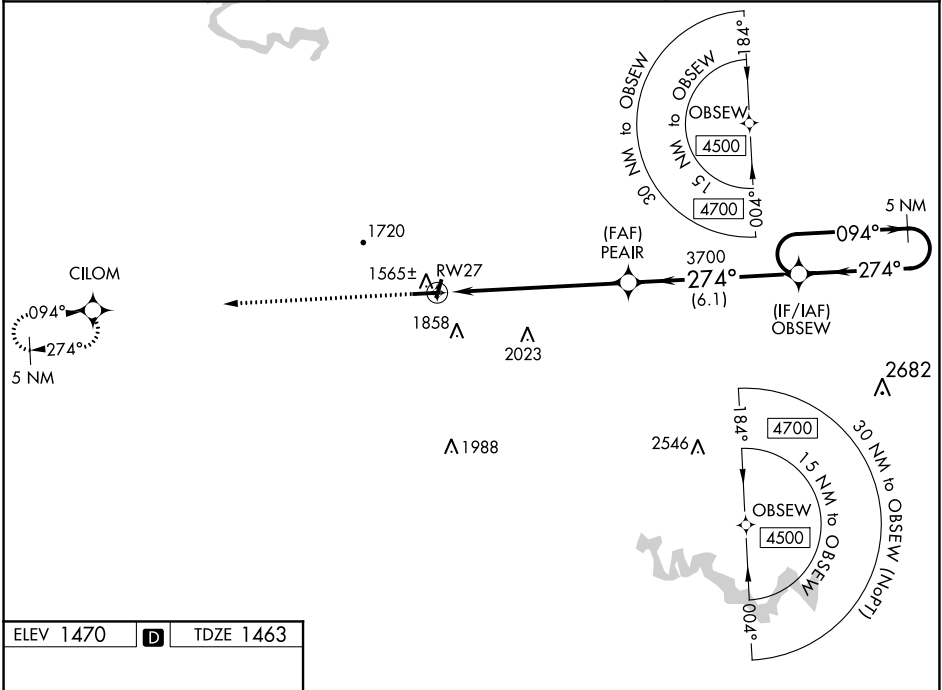
PIKE COUNTY-HATCHER FIELD (PBX)

⚠

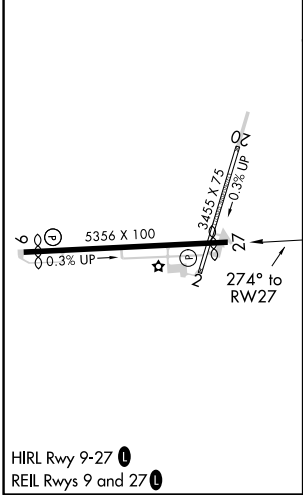
For uncompensated Baro-VNAV systems, LNAV/VNAV NA below -17°C (0°F) or above 54°C (130°F). DME/DME RNP-0.3 NA. Circling NA to Rwys 2 and 20.

MISSED APPROACH: Climb to 4500 direct CILOM and hold.

AWOS-3PT 121.225	INDIANAPOLIS CENTER 126.575 257.85	UNICOM 122.8 (CTAF) 0
----------------------------	--	---------------------------------



ELEV 1470	D	TDZE 1463
-----------	----------	-----------



4500	CILOM	PEAIR	OBSEW	5 NM Holding Pattern
* LNAV only.				
RWY 27	* 1.9 NM to RWY 27	3700	274°	094° → 4500
1.9	5 NM	6.1 NM		GP 3.00° TCH 47
CATEGORY	A	B	C	D
LPV DA	1663-1 200 (200-1)			
LNAV/VNAV DA	2175-2 1/2 712 (800-2 1/2)			
LNAV MDA	2120-1 657 (700-1)		2120-1 3/4 657 (700-1 3/4)	
C CIRCLING	2120-1 650 (700-1)	2160-1 690 (700-1)	2160-2 690 (700-2)	2460-3 990 (1000-3)