

WAAS CH 70403 W20A	APP CRS 203°	Rwy Idg TDZE 1178 Apt Elev 1178
--	------------------------	---

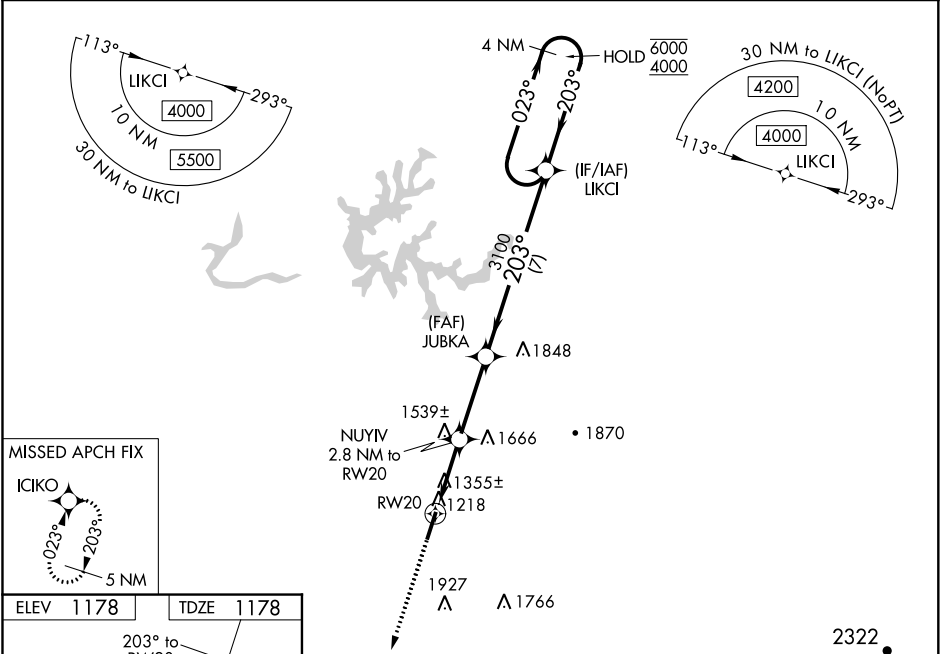
RNAV (GPS) RWY 20
WILLIAMSBURG-WHITLEY COUNTY (BYL)

RNP APCH.

⚠ Rwy 20 helicopter visibility reduction below $\frac{3}{4}$ SM NA. Baro-VNAV NA when using London altimeter setting. For uncompensated Baro-VNAV systems, LNAV/VNAV NA below -17°C or above 54°C .
⚠ VDP NA when using London altimeter setting. When local altimeter setting not received, use London altimeter setting and increase all DAs 48 feet and all MDAs 60 feet; increase LPV all Cats visibility $\frac{1}{8}$ SM, LNAV/VNAV all Cats visibility $\frac{1}{4}$ SM, LNAV Cats C and D and Circling Cat C visibility $\frac{1}{4}$ SM.

MISSED APPROACH:
Climb to 4600 direct
ICKO and hold.

AWOS-3 119.575	INDIANAPOLIS CENTER 124.625 371.925	UNICOM 122.7 (CTAF) 0
--------------------------	---	---------------------------------



RW20

02Z

5,499 x 100

0.4% UP

2

MRL Rwy 2-20 0

REIL Rws 2 and 20 0

<div> <div>4600</div> <div>↑</div> </div> <div> <div>ICKO</div> <div>✱</div> </div>	<div>VGSI and RNAV glidepath not coincident. (VGSI Angle 3.17/TCH 30).</div>	<div> <div>4 NM</div> <div>Holding Pattern</div> </div>	<div> <div>LIKCI</div> <div>3100</div> </div>					
<div>*LNAV only.</div>								
<div> <div>NUYIV</div> <div>2.8 NM to RW20</div> </div>	<div> <div>JUBKA</div> <div>3100</div> </div>	<div> <div>023° → 6000</div> <div>← 203° 4000</div> </div>						
<div> <div>*1.4 NM to RW20</div> <div>RW20</div> </div>		<div> <div>203°</div> <div>3100</div> </div>						
<div> <div>2100*</div> </div>	<div> <div>3.1 NM</div> <div>7 NM</div> </div>	<div> <div>GP 3.00°</div> <div>TCH 45</div> </div>						
<div> <div>1.4</div> <div>1.4</div> </div>		<div> <div>CATEGORY</div> <div>A</div> <div>B</div> <div>C</div> <div>D</div> </div>						
<div> <div>LPV</div> <div>DA</div> </div>	<div> <div>1554-1$\frac{1}{4}$</div> <div>376 (400-1$\frac{1}{4}$)</div> </div>							
<div> <div>LNAV/VNAV</div> <div>DA</div> </div>	<div> <div>1670-1$\frac{5}{8}$</div> <div>492 (500-1$\frac{5}{8}$)</div> </div>							
<div> <div>LNAV MDA</div> </div>	<div> <div>1680-1</div> <div>502 (600-1)</div> </div>	<div> <div>1680-1$\frac{3}{8}$</div> <div>502 (600-1$\frac{3}{8}$)</div> </div>						
<div> <div>CIRCLING</div> </div>	<div> <div>1760-1</div> <div>582 (600-1)</div> </div>	<div> <div>1760-1$\frac{1}{2}$</div> <div>582 (600-1$\frac{1}{2}$)</div> <div>2080-3</div> <div>902 (1000-3)</div> </div>						

SE-1, 31 DEC 2020 to 28 JAN 2021

SE-1, 31 DEC 2020 to 28 JAN 2021