

| | | | |
|--|------------------------|-----------------------------|---|
| WAAS CH 99632 W03A | APP CRS 034° | Rwy Idg TDZE Apt Elev | 6200 834 866 |
|--|------------------------|-----------------------------|---|

RNAV (GPS) RWY 3

CLEVELAND RGNL JETPORT (RZR)

RNP APCH.

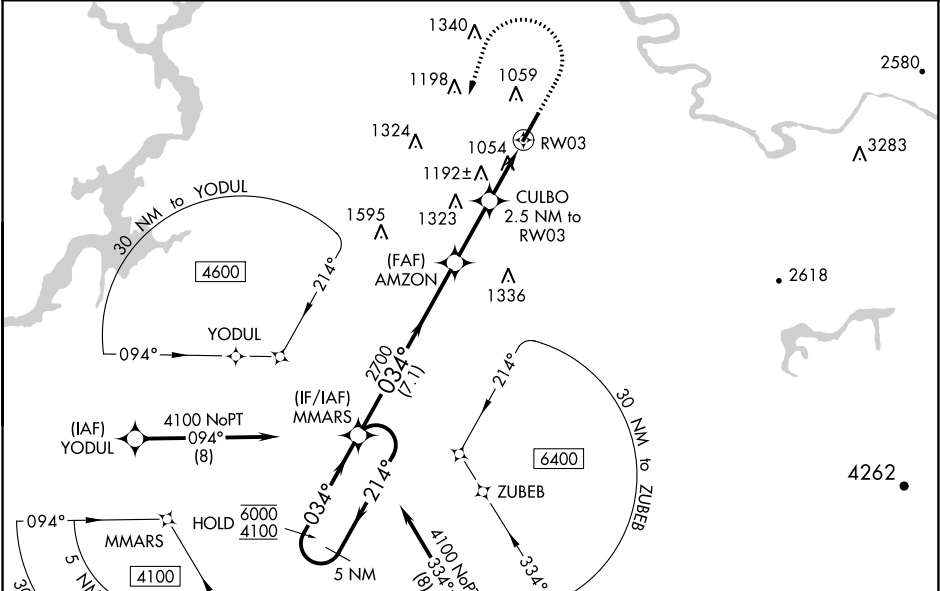
▼

▲

Rwy 3 helicopter visibility reduction below ¾ SM NA.
For uncompensated Baro-VNAV systems, LNAV/VNAV
NA below -16°C or above 20°C.

MISSED APPROACH: Climb to 1800 then climbing left turn to
4100 direct MMARS and hold.

| | | |
|--------------------------|--------------------------------------|---------------------------------|
| AWOS-3 120.475 | CHATTANOOGA APP CON★ 125.1 | UNICOM 122.7 (CTAF) 0 |
|--------------------------|--------------------------------------|---------------------------------|



| | |
|---|---|
| ELEV 866 D TDZE 834 | |
| <div>5 NM Holding Pattern MMARS</div> <div>6000 ← 214° 4100 → 034°</div> <div>GP 3.40° TCH 55</div> <div>2700</div> <div>7.1 NM</div> <div>2.5 NM</div> <div>0.8</div> <div>1.7</div> <div>1800</div> <div>4100</div> <div>MMARS</div> <div>*LNAV only.</div> <div>CULBO 2.5 NM to RWY 3</div> <div>*1.7 NM to RWY 3</div> <div>RWY 3</div> <div>034° to RWY 3</div> <div>MIRL Rwy 3-21 0</div> <div>REIL Rwy 3 and 21</div> | |
| CATEGORY | A B C D |
| LPV DA | 1034-¾ 200 (200-¾) 1104-7/8 270 (300-7/8) |
| LNAV/VNAV DA | 1437-1¾ 603 (600-1¾) |
| LNAV MDA | 1400-1 566 (600-1) 1400-1 5/8 566 (600-1 1/8) |
| C CIRCLING | 1460-1 594 (600-1) 1580-2 714 (800-2) 1780-3 914 (1000-3) |