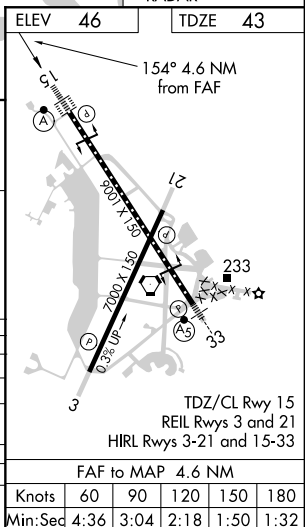


ILS or LOC RWY 15  
CHARLESTON AFB/INTL (CHS)

**MISSED APPROACH:** Climb to 500 then climbing left turn to 2000 on CHS VORTAC R-055 to WANDO/CHS 13 DME and hold.

RADAR or ADF or  
DME REQUIRED



SE-2, 31 DEC 2020 to 28 JAN 2021