

CHARLESTON, SOUTH CAROLINA

NOTE: Chart not to scale.

DEPARTURE ROUTE DESCRIPTION

TAKEOFF RUNWAY 3: Climb on heading 031° to 560, then right turn direct LOJRN, then on depicted route to PLMITO, thence. . . .

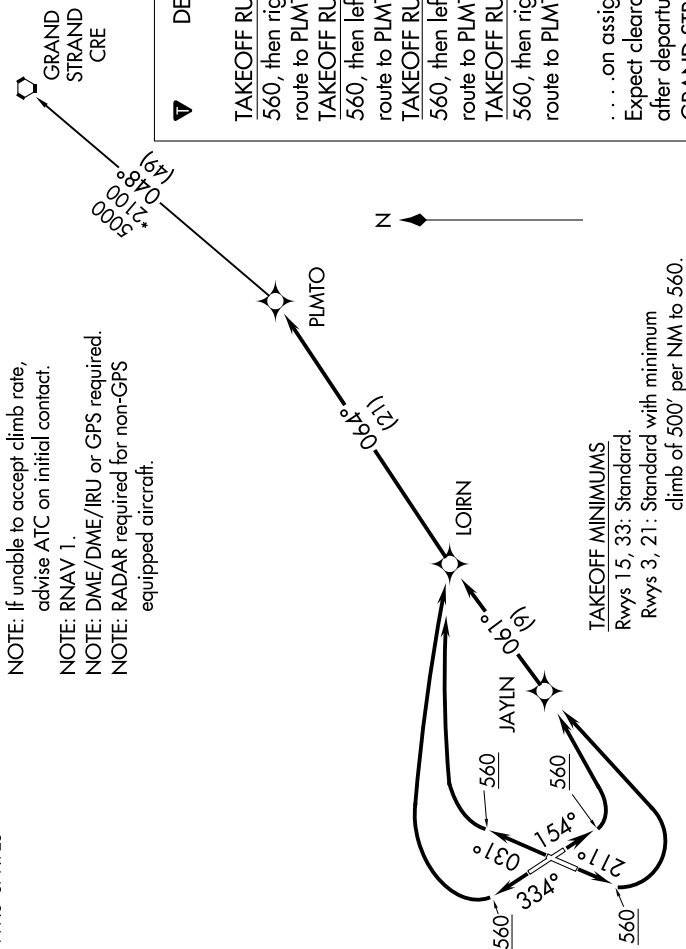
TAKEOFF RUNWAY 15: Climb on heading 154° to 560, then left turn direct JAYLN, then on depicted route to PLMITO, thence. . . .

TAKEOFF RUNWAY 21: Climb on heading 211° to 560, then left turn direct JAYLN, then on depicted route to PLMITO, thence. . . .

TAKEOFF RUNWAY 33: Climb on heading 334° to 560, then right turn direct LOJRN, then on depicted route to PLMITO, thence. . . .

... on assigned transition/route. Maintain 4000. Expect clearance to filed altitude within ten minutes after departure.

GRAND STRAND TRANSITION (PLMTO3.CRE):



ATIS	
124.75	
CINC DEL	
127.325	291.65
CPDLC	
GND CON	
121.9	348.6
CHARLESTON TOWER	
126.0	239.0
DEP CON	
119.3	379.925

TAKEOFF MINIMUMS
Rwys 15, 33: Standard
Rwys 3, 21: Standard
climb of 500 ft

PLMTO THREE DEPARTURE (RNAV)

CHARLESTON, SOUTH CAROLINA
CHARLESTON AFB/INTL (CHS)

(PLMTO3.PLMTO) 05NOV20