

APP CRS	Rwy Idg	9001
334°	TDZE	45
	Apt Elev	46

RNAV (RNP) Z RWY 33

RNP AR APCH. RF required.

T For uncompensated Baro-VNAV systems, procedure NA below -5°C or above 54°C. For inop ALS, increase RNP 0.23 all Cats visibility to RVR 5500.

MALSR



MISSED APPROACH: Climb to 3000 direct MAMAE and hold, continue to climb-in-hold to 3000.

ATIS
124.75

CHARLESTON APP CON
120.7 306.925

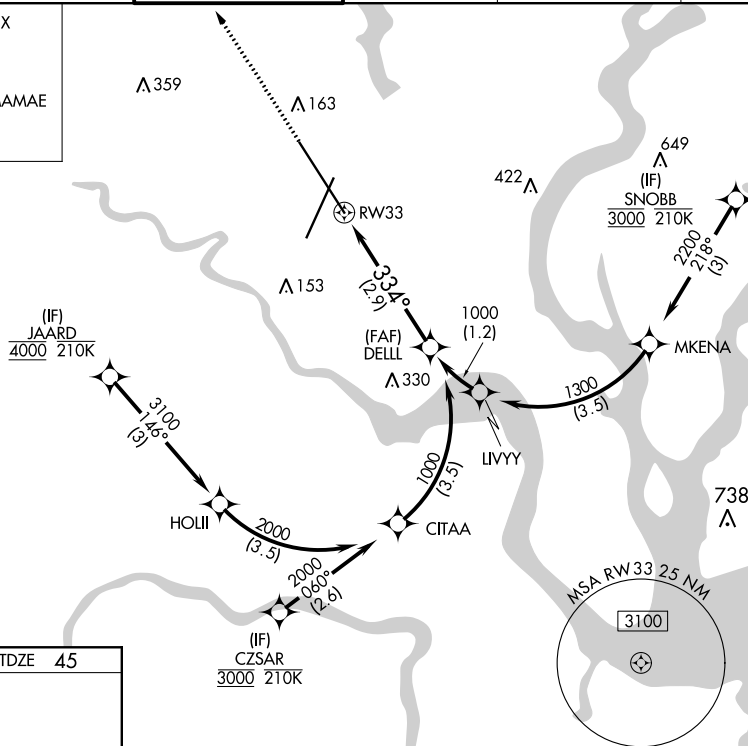
CHARLESTON TOWER
126.0 239.0

GND CON
121.9 348.6

CLNC DEL
127.325 291.65

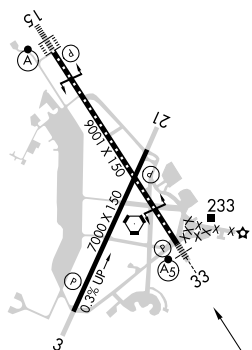
CPDLC

MISSED APCH FIX



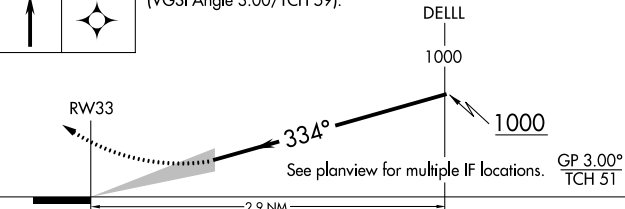
ELEV 46

TDZE 45



TDZ/CL Rwy 15
REIL Rwy 3 and 21
HIRL Rwy 3-21 and 15-33

3000	MAMAE	VGSI and RNAV glidepath not coincident (VGSI Angle 3.00/TCH 59).
------	-------	--



CATEGORY	A	B	C	D
RNP 0.23 DA		419/35	374 (400- ⁵ / ₆)	
RNP 0.30 DA		477/40	432 (500- ³ / ₄)	

AUTHORIZATION REQUIRED