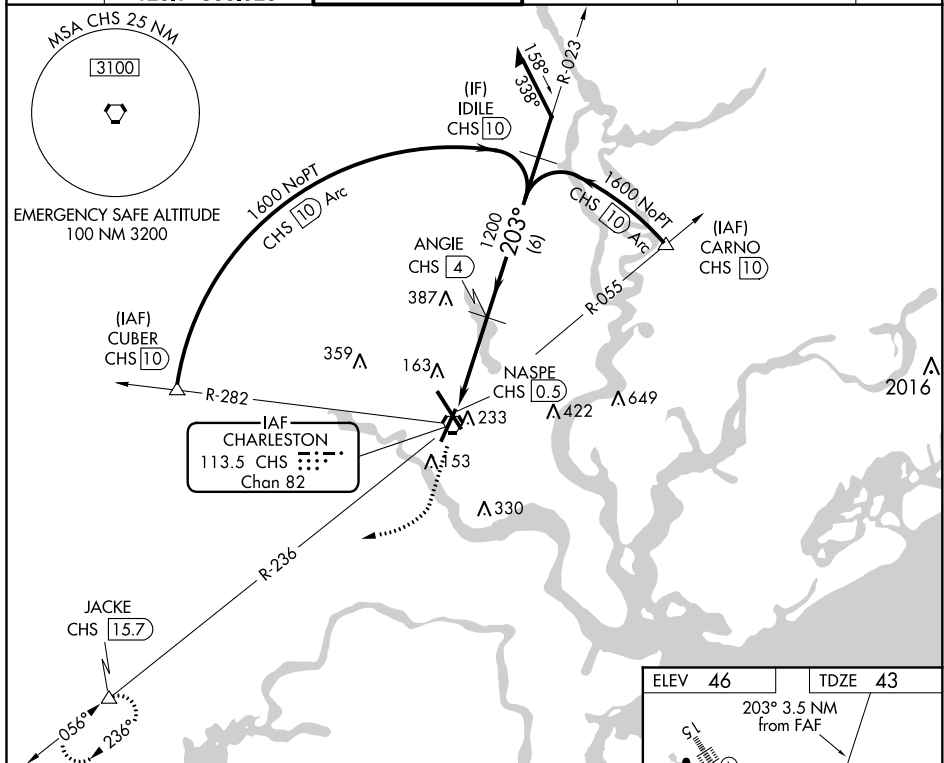


VOR/DME or TACAN RWY 21
CHARLESTON AFB/INTL (CHS)

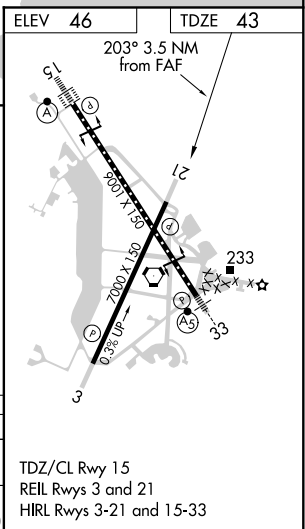


MISSED APPROACH: Climb to 1000 then climbing right turn to 2000 via CHS R-236 to JACKE INT/15.7 DME and hold.

ATIS 124.75	CHARLESTON APP CON 120.7 306.925	CHARLESTON TOWER 126.0 239.0	GND CON 121.9 348.6	CLNC DEL 127.325 291.65	CPDLC
----------------	-------------------------------------	---------------------------------	------------------------	----------------------------	-------



1000 ↑	2000 ↶ CHS R-236	JACKIE △	<div><div>CHS VORTAC</div><div>Remain within 15 NM</div><div>023°</div><div>203°</div><div>1700</div><div>1200</div><div>2.97°</div><div>TCH 50</div><div>1.1</div><div>2.4 NM</div><div>6 NM</div><div>NASPE CHS 0.5</div><div>CHS 1.6</div><div>ANGIE CHS 4</div><div>IDILE CHS 10</div></div>				
CATEGORY	A	B	C	D	E		
S-21	440-1	397 (400-1)	440-1½ 397 (400-1½)				
CIRCLING	540-1	494 (500-1)	540-1½ 494 (500-1½)	600-2 554 (600-2)	740-2½ 694 (700-2½)		



VOR/DME or TACAN RWY 21