

NOTE: Chart not to scale.

(NARRATIVE ON FOLLOWING PAGE)

SE-2, 31 DEC 2020 to 28 JAN 2021

TOP ALTITUDE:
8000

NOTE: For turbojets only.
NOTE: DME/DME/IRU or GPS required.

NOTE: RNAV 1.

NOTE: RADAR required.

NOTE: If unable to accept climb rates, advise ATC on initial contact.

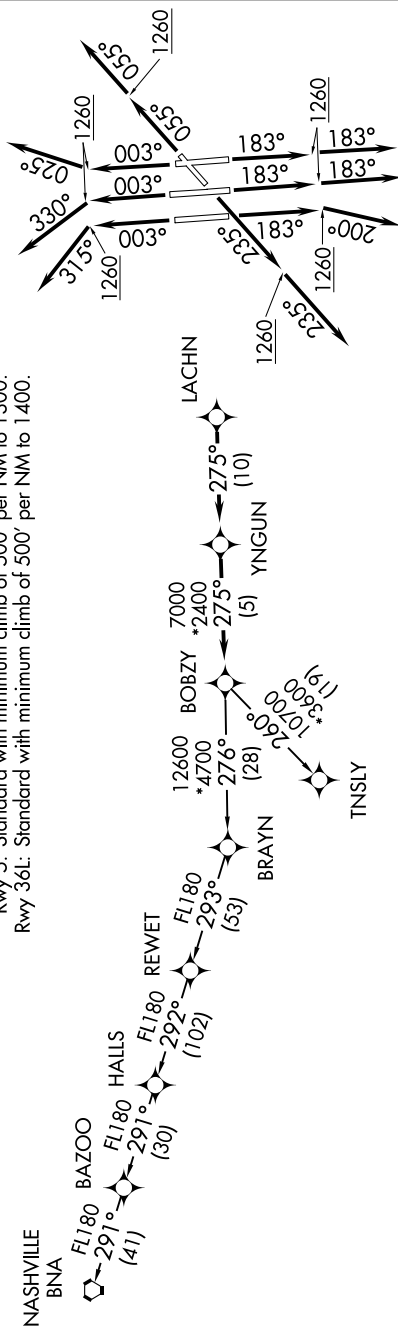
NOTE: Accelerate to 250K, if unable advise ATC. Upon reaching 10000 MSL, accelerate to and maintain 280K, if unable advise ATC.

TAKEOFF MINIMUMS

Rwys 18C/L/R, 23, 36C/R: Standard with minimum climb of 500' per NM to 1260.

Rwy 5: Standard with minimum climb of 500' per NM to 1300.

Rwy 36L: Standard with minimum climb of 500' per NM to 1400.



BOBZY FOUR DEPARTURE (RNAV)

(BOBZY4.BOBZY) 03JAN19

CHARLOTTE, NORTH CAROLINA
CHARLOTTE/DOUGLAS INTL (CLT)