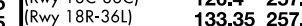
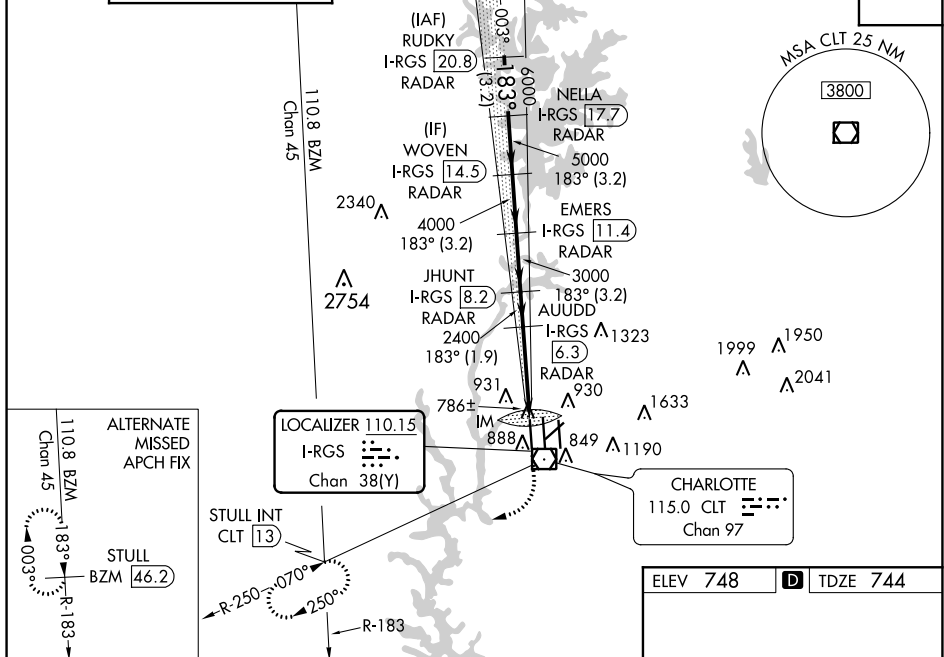


**ILS RWY 18R (SA CAT I)**  
CHARLOTTE/DOUGLAS INTL (CLT)

**MISSED APPROACH:** Climb to 1200 then climbing right turn to 4000 on CLT VOR/DME R-250 to STULL INT/CLT 13 DME and hold, continue climb-in-hold to 4000.

**T** Simultaneous approach authorized.  
**A** Requires specific OPSPEC, MSPEC or LOA approval and use of HUD to DH.

D-ATIS	CHARLOTTE APP CON	CHARLOTTE TOWER		GND CON		CLNC DEL
ARR <b>121.15</b>	(001°-119°) <b>128.32</b>	(Rwys 18L-36R, 5-23) <b>118.1</b>	<b>257.8</b>	<b>121.8</b>	<b>348.6 (WEST)</b>	<b>127.15</b>
DEP <b>132.1</b>	(120°-295°) <b>120.05</b>	(Rwy 18C-36C) <b>126.4</b>	<b>257.8</b>			
	(296°-360°) <b>134.75</b>	(Rwy 18R-36L) <b>133.35</b>	<b>257.8</b>	<b>121.9</b>	<b>348.6 (EAST)</b>	<b>348.6</b>
	(180°-359°) <b>257.2</b>					
	(360°-179°) <b>307.8</b>					
						CPDLC



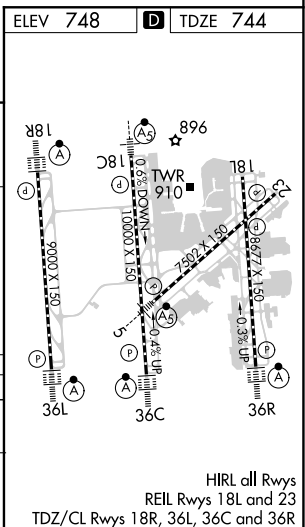
VGSI and ILS glidepath not coincident (VGSI Angle 2.80/TCH 65).

STATION	TYPE	RANGE (NM)
RUDKY	I-RGS	20.8
NELLA	I-RGS	17.7
WOVEN	I-RGS	14.5
EMERS	I-RGS	11.4
JHUNT	I-RGS	8.2
AUDD	I-RGS	6.3

CATEGORY	A	B	C	D
S-ILS 18R	3.2 NM	3.2 NM	1.9 NM	5 NM

RA 228/14 150 DA 894

SA CATEGORY I ILS SPECIAL AIRCREW  
& AIRCRAFT CERTIFICATION REQUIRED



SE-2, 31 DEC 2020 to 28 JAN 2021

SE-2, 31 DEC 2020 to 28 JAN 2021