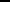
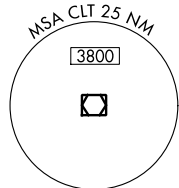
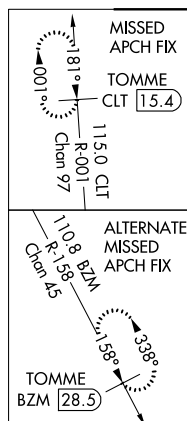
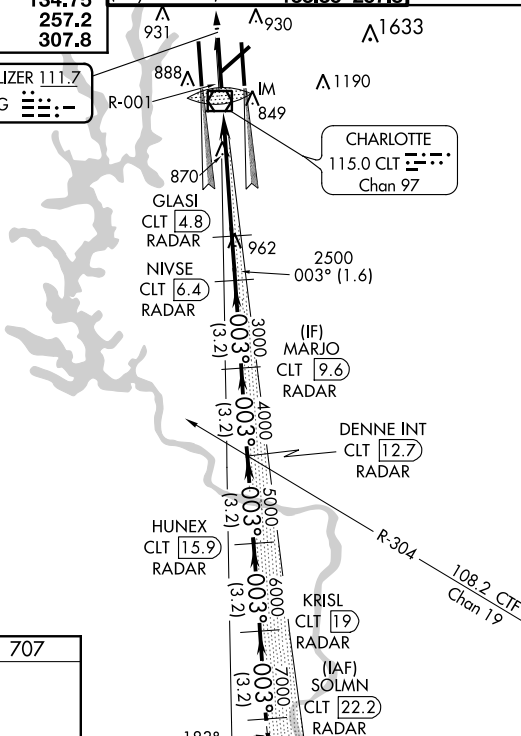


ILS RWY 36C (CAT II & III)
CHARLOTTE/DOUGLAS INTL (CLT)

MISSED APPROACH: Climb to 3000 on CLT
VOR/DME R-001 to TOMME/CLT 15.4 DME
and hold.



LOCALIZER 111.7
I-DQG 



3000
↑
CLT R-001

183°

VGS and ILS glidepath not coincident
(VGS Angle 3.00/TCH 72).

SOLMN CLT 22.2 RADAR

KRISL CLT 19 RADAR

DENNE INT CLT 12.7 RADAR

HUNEX CLT 15.9 RADAR

MARJO CLT 9.6 RADAR

NIVSE CLT 6.4 RADAR

GLASI CLT 4.8 RADAR

TOMME CLT 15.4

IM 809

2500

3000

4000

5000

6000

7000

003° 8000

GS 3.00
TCH 57

5.4 NM 1.6 NM 3.2 NM 3.2 NM 3.2 NM 3.2 NM 3.2 NM

CATEGORY	A	B	C	D
S-ILS 36C		CAT II	RA 126/12	100 DA 807
S-ILS 36C			CAT IIIa	RVR 07
S-ILS 36C			CAT IIIb	RVR 07
S-ILS 36C			CAT IIIc	NA

HIRL all Rwy's
REIL Rwy's 18L and 23
TDZ/CL Rwy's 18R, 36L, 36C and 36R

CATEGORY II & III ILS - SPECIAL AIRCREW
& AIRCRAFT CERTIFICATION REQUIRED

CHARLOTTE/DOUGLAS INTL (CLT)

35°13'N-80°57'W

ILS RWY 36C (CAT II & III)