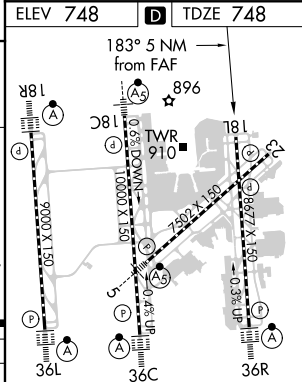
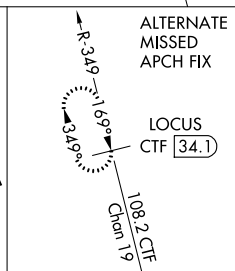


ILS or LOC RWY 18L  
CHARLOTTE/DOUGLAS INTL (CLT)

**MISSED APPROACH:** Climb to 1300 then climbing left turn to 4000 on CLT VOR/DME R-093 to LOCAS INT/CLT 24.9 DME and hold.

Rwy 18L helicopter visibility reduction below RVR 4000 NA.

CPDLC

HIRL all Rwy's					
REIL Rwy's 18L and 23					
TDZ/CL Rwy's 18R, 36L, 36C and 36R					
FAF to MAP 5 NM					
Knots	60	90	120	150	180
Min:Sec	5:00	3:20	2:30	2:00	1:40

SE-2, 31 DEC 2020 to 28 JAN 2021